

## Product datasheet for **AM31735PU-N**

### CD247 (1-165) Mouse Monoclonal Antibody [Clone ID: 4A12-F6]

#### Product data:

Product Type:	Primary Antibodies
Clone Name:	4A12-F6
Applications:	ELISA, IHC, IP, WB
Recommended Dilution:	<b>ELISA.</b> <b>Immunohistochemistry on Paraffin Sections:</b> 5 µg/ml. <b>Immunoprecipitation.</b> <b>Western Blot:</b> 1/500 - 1/1000.
Reactivity:	Human
Host:	Mouse
Isotype:	IgG1
Clonality:	Monoclonal
Immunogen:	CD247 antibody was raised against CD3Z (AAH25703, 1 a.a. ~ 165 a.a) full length recombinant protein with GST tag.
Specificity:	Recognizes CD247 / CD3Z at aa 1-165.
Formulation:	PBS, pH 7.4 State: Purified State: Liquid purified Ig fraction
Concentration:	lot specific
Purification:	Protein A Chromatography
Conjugation:	Unconjugated
Storage:	Store the antibody (in aliquots) at -20°C or -80°C. Avoid freeze-thaw cycles.
Stability:	Shelf life: one year from despatch.
Gene Name:	CD247 molecule
Database Link:	<a href="#">Entrez Gene 919 Human P20963</a>



[View online »](#)

**Background:**

CD3 consists of five different polypeptide chains (designated as gamma, delta, epsilon, zeta, and eta). The CD3 complex is closely associated at the lymphocyte cell surface with the T cell antigen receptor (TCR). It is involved in signal transduction to the T cell interior following antigen recognition, which culminates in cytokine release, cellular proliferation. CD3 antigen is a highly specific marker for T cells, and is present in majority of T cell neoplasms.

**Synonyms:**

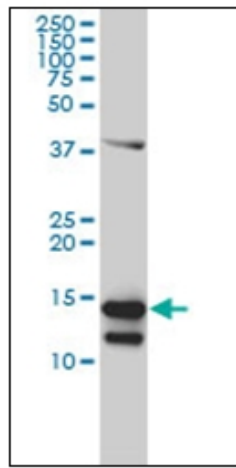
T3Z, TCRZ, CD3 zeta chain

**Protein Families:**

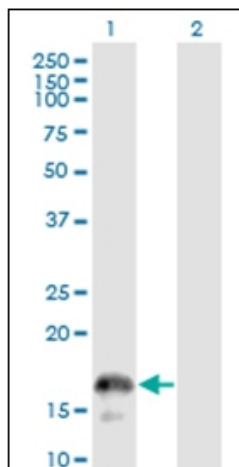
Druggable Genome, Transmembrane

**Protein Pathways:**

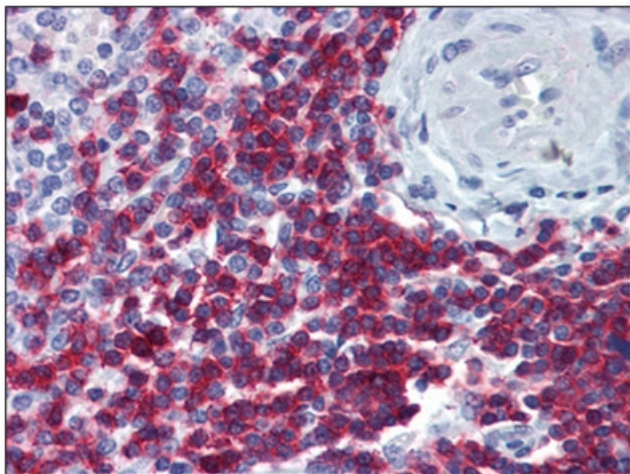
Natural killer cell mediated cytotoxicity, T cell receptor signaling pathway

**Product images:**


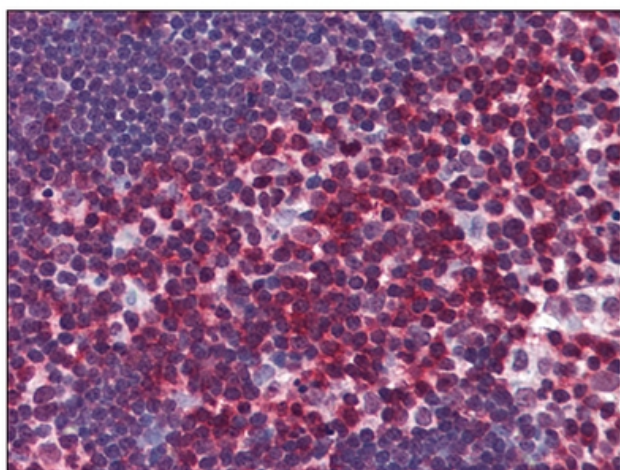
Western Blot analysis of CD247 expression in Jurkat cell lysate.



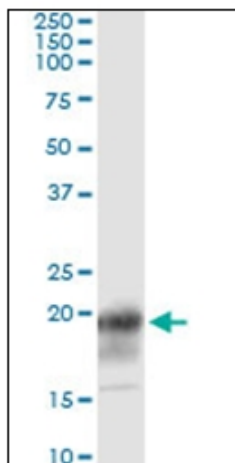
Western Blot analysis of CD247 expression in transfected 293T cell line. Lane 1: CD247 transfected lysate (Predicted MW: 18.7 KDa). Lane 2: Non-transfected lysate.



Human Spleen: Formalin-Fixed, Paraffin-Embedded (FFPE)



Human Thymus: Formalin-Fixed, Paraffin-Embedded (FFPE)



Immunoprecipitation of CD247 transfected lysate using anti-CD247 monoclonal antibody and Protein A Magnetic Bead.