

Product datasheet for **AM31734PU-N**

Cyclin H (CCNH) Mouse Monoclonal Antibody [Clone ID: 1B8]

Product data:

Product Type:	Primary Antibodies
Clone Name:	1B8
Applications:	ELISA, IF, IHC, WB
Recommended Dilution:	ELISA. Immunofluorescence: 10 µg/ml. Immunohistochemistry on Paraffin Sections: 5 µg/ml. Western Blot: 1/500 - 1/1000.
Reactivity:	Human
Host:	Mouse
Isotype:	IgG2a
Clonality:	Monoclonal
Immunogen:	CCNH antibody was raised against CCNH (AAH05280, 1 a.a. ~ 110 a.a) partial recombinant protein with GST tag.
Specificity:	Recognizes CCNH / Cyclin H.
Formulation:	PBS, pH 7.2 State: Purified State: Liquid purified Ig fraction
Purification:	Protein A Chromatography
Conjugation:	Unconjugated
Storage:	Store the antibody (in aliquots) at -20°C or -80°C. Avoid freeze-thaw cycles.
Stability:	Shelf life: one year from despatch.
Gene Name:	cyclin H
Database Link:	Entrez Gene 902 Human P51946



[View online »](#)

Background:

Cyclin H is a member of the cyclin-dependent protein kinase family, whose members are characterized by a dramatic periodicity in protein abundance through the cell cycle. Cyclins function as regulators of CDK kinases. Different cyclins exhibit distinct expression and degradation patterns which contribute to the temporal coordination of each mitotic event. Cyclin H forms a trimeric complex with cyclin H and MAT1, which functions as a CDK-activating kinase (CAK). Cyclin H is an essential component of the transcription factor TFIIF that is involved in transcription initiation and DNA repair.

Synonyms:

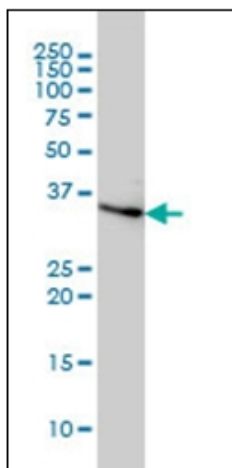
Cyclin-H, MO15-associated protein, p37, p34, CCNH

Protein Families:

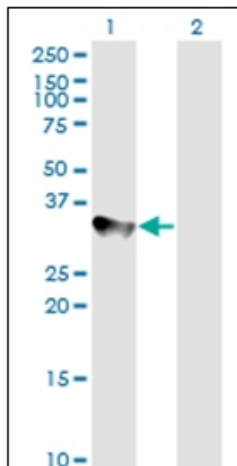
Druggable Genome, Transcription Factors

Protein Pathways:

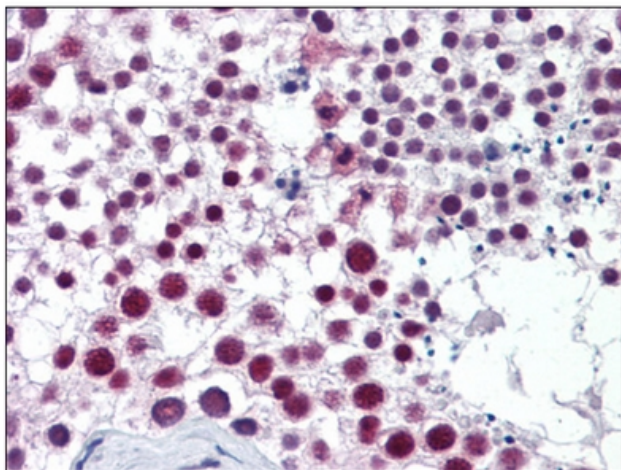
Cell cycle, Nucleotide excision repair

Product images:

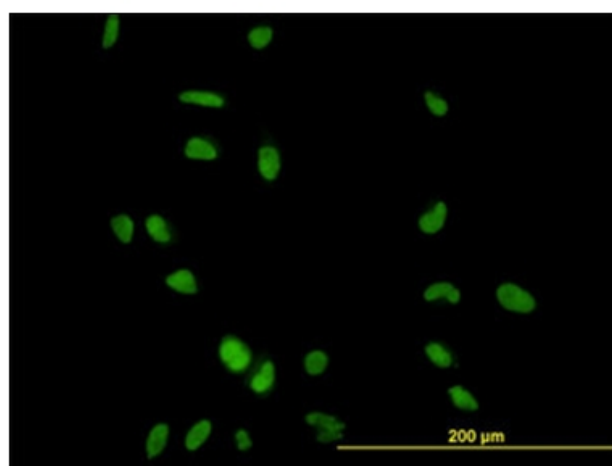
Western Blot analysis of CCNH expression in HeLa cell lysate.



Western Blot analysis of CCNH expression in transfected 293T cell line. Lane 1: CCNH transfected lysate (37.6 KDa). Lane 2: Non-transfected lysate.



Human Testis: Formalin-Fixed, Paraffin-Embedded (FFPE)



Immunofluorescence of monoclonal antibody to CCNH on HeLa cell at 10 mg/ml.