

Product datasheet for **AM31733PU-N**

CBSL Mouse Monoclonal Antibody [Clone ID: 5F7]

Product data:

Product Type:	Primary Antibodies
Clone Name:	5F7
Applications:	ELISA, IHC, WB
Recommended Dilution:	ELISA. Immunohistochemistry on Paraffin Sections: 5 µg/ml. Western Blot.
Reactivity:	Human
Host:	Mouse
Isotype:	IgG1
Clonality:	Monoclonal
Immunogen:	CBS (NP_000062, 1 a.a. ~ 101 a.a) partial recombinant protein with GST tag.
Specificity:	Recognizes Human CBS.
Formulation:	PBS, pH 7.2 State: Purified State: Liquid purified Ig fraction
Purification:	Protein A Chromatography
Conjugation:	Unconjugated
Storage:	Store the antibody (in aliquots) at -20°C or lower. Avoid repeated freezing and thawing.
Stability:	Shelf life: one year from despatch.
Gene Name:	cystathionine beta-synthase like
Database Link:	Entrez Gene 875 Human Entrez Gene 102724560 Human P35520
Background:	CBS is involved in transsulfuration pathway. The first step of this pathway, from homocysteine to cystathionine, is catalyzed by CBS. CBS deficiency can cause homocystinuria which affects many organs and tissues including the eyes, the central nervous, skeletal, and vascular systems.
Synonyms:	Cystathionine beta-synthase, Serine sulfhydrase, Beta-thionase

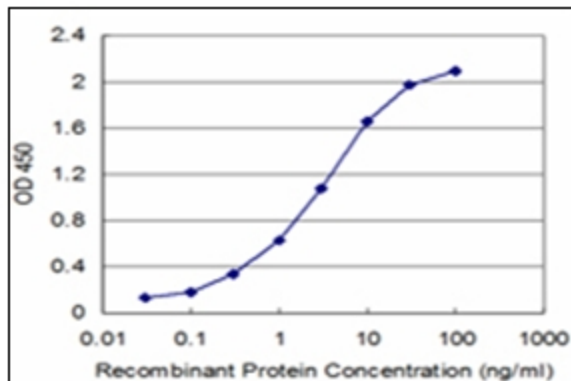


[View online »](#)

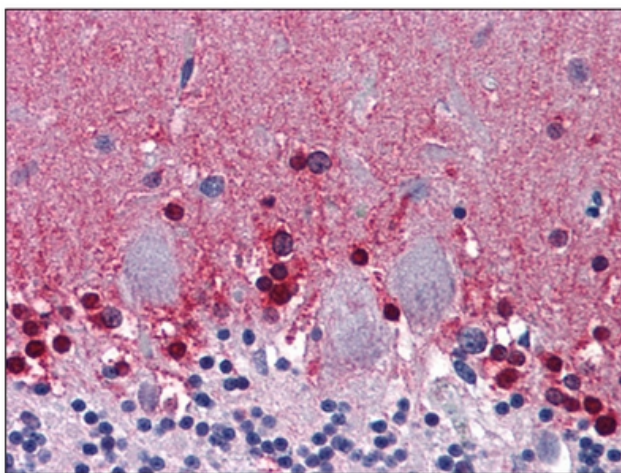
Protein Families: Druggable Genome

Protein Pathways: Cysteine and methionine metabolism, Glycine, serine and threonine metabolism, Metabolic pathways, Selenoamino acid metabolism

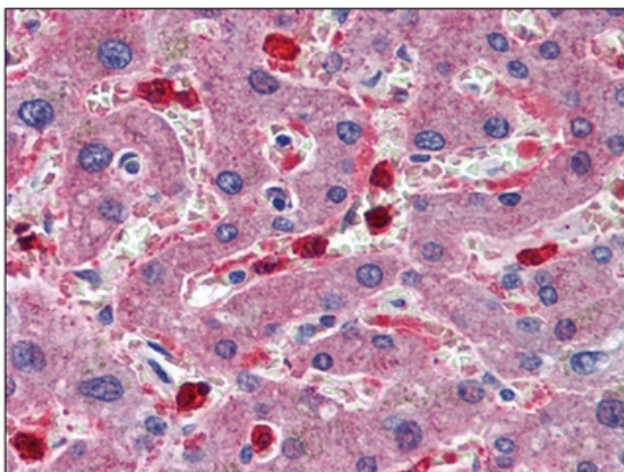
Product images:



Detection limit for recombinant GST tagged CBS is approximately 0.03ng/ml as a capture antibody.



Human Brain, Cerebellum: Formalin-Fixed, Paraffin-Embedded (FFPE)



Human Liver: Formalin-Fixed, Paraffin-Embedded (FFPE)