

Product datasheet for **AM31730PU-N**

CBSL Mouse Monoclonal Antibody [Clone ID: 3E1]

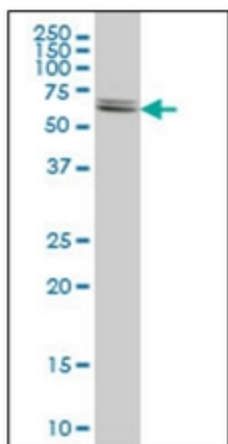
Product data:

Product Type:	Primary Antibodies
Clone Name:	3E1
Applications:	ELISA, IHC, IP, WB
Recommended Dilution:	ELISA. Immunohistochemistry on Paraffin Sections: 5 µg/ml. Immunoprecipitation. Western Blot: 1/500 - 1/1000.
Reactivity:	Human, Rat
Host:	Mouse
Isotype:	IgG2a
Clonality:	Monoclonal
Immunogen:	CBS (NP_000062, 1 a.a. ~ 101 a.a) partial recombinant protein with GST tag.
Specificity:	Recognizes Human CBS.
Formulation:	PBS, pH 7.2 State: Purified State: Liquid purified Ig fraction
Concentration:	lot specific
Purification:	Protein A Chromatography
Conjugation:	Unconjugated
Storage:	Store the antibody (in aliquots) at -20°C or lower. Avoid repeated freezing and thawing.
Stability:	Shelf life: one year from despatch.
Gene Name:	cystathionine beta-synthase like
Database Link:	<u>Entrez Gene 24250 Rat</u> <u>Entrez Gene 102724560 Human</u> <u>P35520</u>

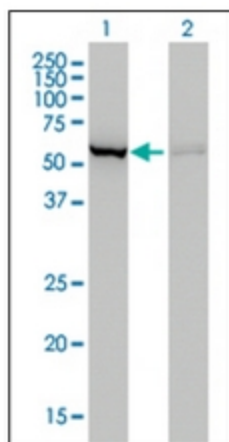


[View online »](#)

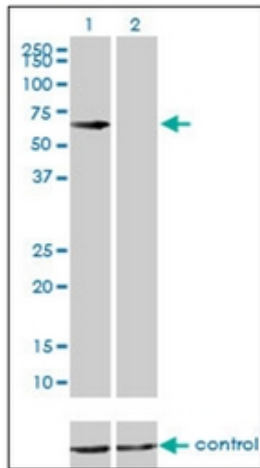
Background:	CBS is involved in transsulfuration pathway. The first step of this pathway, from homocysteine to cystathionine, is catalyzed by CBS. CBS deficiency can cause homocystinuria which affects many organs and tissues including the eyes, the central nervous, skeletal, and vascular systems.
Synonyms:	Cystathionine beta-synthase, Serine sulfhydrase, Beta-thionase
Protein Families:	Druggable Genome
Protein Pathways:	Cysteine and methionine metabolism, Glycine, serine and threonine metabolism, Metabolic pathways, Selenoamino acid metabolism

Product images:

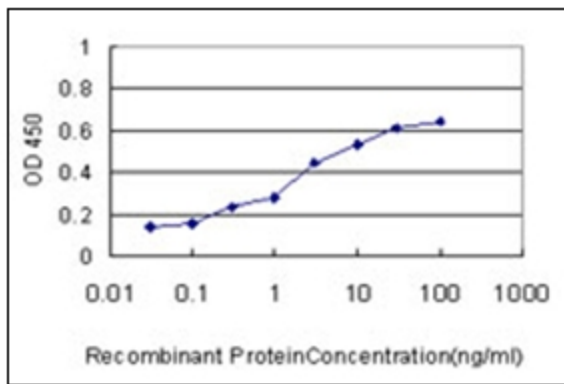
Western Blot analysis of CBS expression in HeLa cell lysate.



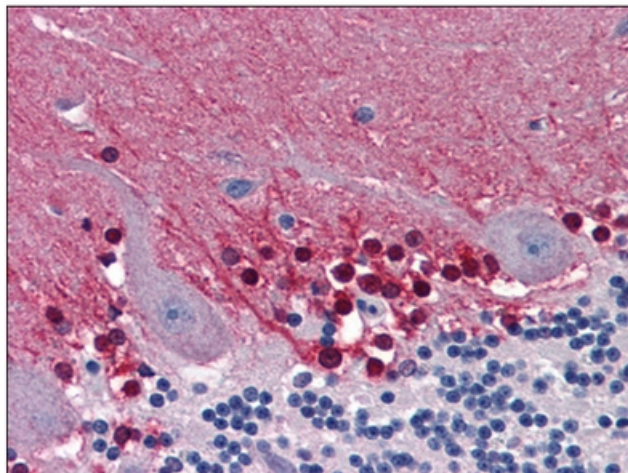
Western Blot analysis of CBS expression in transfected 293T cell line. Lane 1: CBS transfected lysate (61 KDa). Lane 2: Non-transfected lysate.



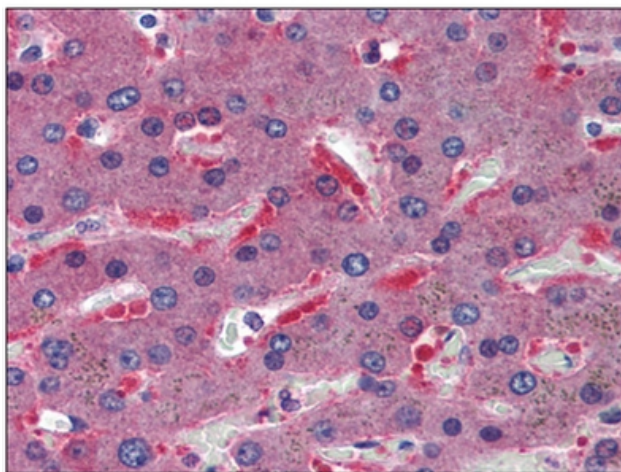
Western blot analysis of CBS over-expressed 293 cell line, cotransfected with CBS Validated Chimera RNAi (Lane 2) or non-transfected control (Lane 1). Blot probed with CBS antibody, clone 3E1. GAPDH (36.1 kDa) used as specificity and loading control.



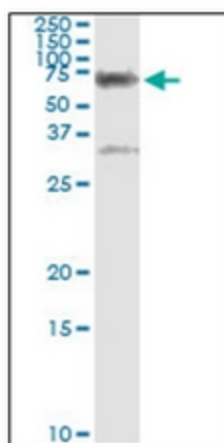
Detection limit for recombinant GST tagged CBS is approximately 0.1ng/ml as a capture antibody.



Human Brain, Cerebellum: Formalin-Fixed, Paraffin-Embedded (FFPE)



Human Liver: Formalin-Fixed, Paraffin-Embedded (FFPE)



Immunoprecipitation of CBS transfected lysate using anti-CBS monoclonal antibody and Protein A Magnetic Bead.