

Product datasheet for **AM31729PU-N**

CASQ2 Mouse Monoclonal Antibody [Clone ID: 1C6]

Product data:

| | |
|-----------------------|---|
| Product Type: | Primary Antibodies |
| Clone Name: | 1C6 |
| Applications: | ELISA, IHC, WB |
| Recommended Dilution: | ELISA: Immunohistochemistry on Paraffin Sections: 5 µg/ml. Western Blot: 1/500 - 1/1000. |
| Reactivity: | Human |
| Host: | Mouse |
| Isotype: | IgG2b |
| Clonality: | Monoclonal |
| Immunogen: | CASQ2 antibody was raised against CASQ2 (AAH22288, 20 a.a. ~ 400 a.a) full-length recombinant protein with GST tag. |
| Specificity: | Recognizes CASQ2 / Calsequestrin. |
| Formulation: | PBS, pH 7.2 State: Purified State: Liquid purified Ig fraction |
| Concentration: | lot specific |
| Purification: | Protein A Chromatography |
| Conjugation: | Unconjugated |
| Storage: | Store the antibody (in aliquots) at -20°C or -80°C. Avoid freeze-thaw cycles. |
| Stability: | Shelf life: one year from despatch. |
| Gene Name: | calsequestrin 2 |
| Database Link: | Entrez Gene 845 Human O14958 |
| Background: | The CASQ2 gene specifies the cardiac isoform of calsequestrin. This isoform is localized to the sarcoplasmic reticulum in cardiac and slow skeletal muscle cells. Calsequestrin is a calcium binding protein that stores calcium for muscle function. |

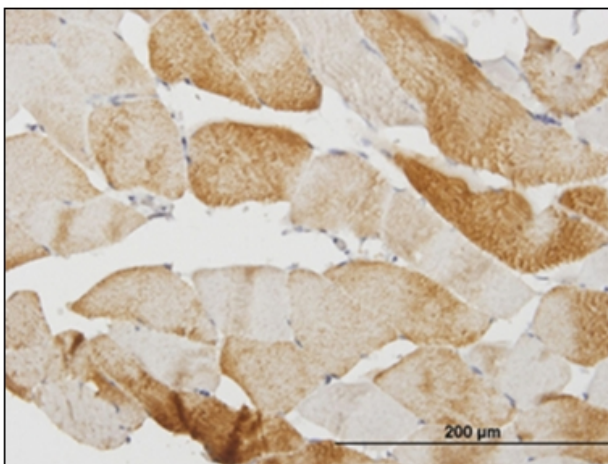


[View online »](#)

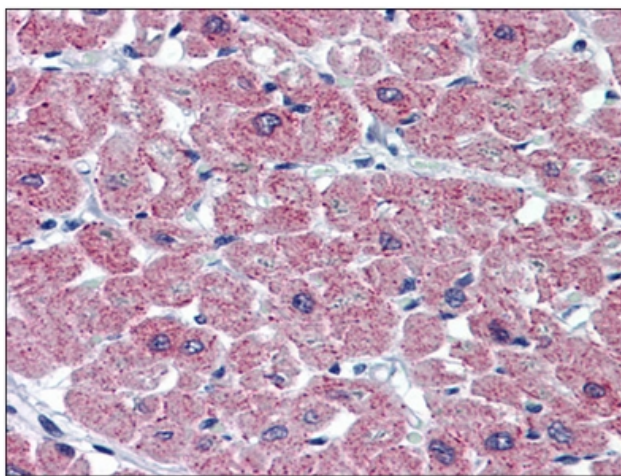
Synonyms: CASQ2

Protein Families: Druggable Genome

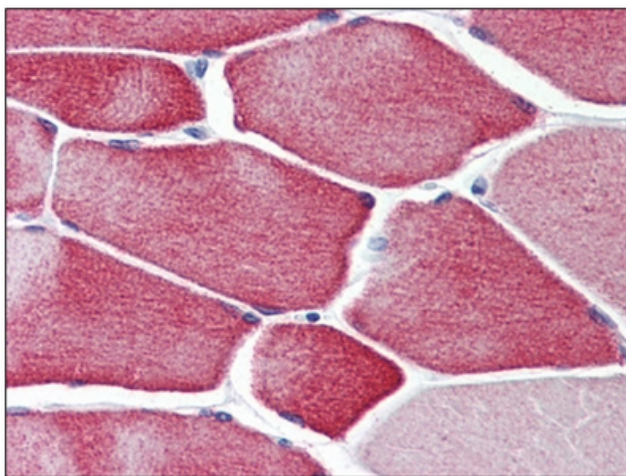
Product images:



Immunoperoxidase of monoclonal antibody to CASQ2 on formalin-fixed paraffin-embedded human skeletal muscle at 3 ug/ml.



Human Heart: Formalin-Fixed, Paraffin-Embedded (FFPE)



Human Skeletal Muscle: Formalin-Fixed, Paraffin-Embedded (FFPE)