

Product datasheet for **AM31726PU-N**

SERPING1 Mouse Monoclonal Antibody [Clone ID: 3F4-1D9]

Product data:

| | |
|-----------------------|--|
| Product Type: | Primary Antibodies |
| Clone Name: | 3F4-1D9 |
| Applications: | ELISA, IHC, IP, WB |
| Recommended Dilution: | ELISA. Immunohistochemistry on Paraffin Sections: 5 µg/ml. Immunoprecipitation. Western Blot: 1/500 - 1/1000. |
| Reactivity: | Human |
| Host: | Mouse |
| Isotype: | IgG2a |
| Clonality: | Monoclonal |
| Immunogen: | SERPING1 antibody was raised against SERPING1 (AAH11171, 1 a.a. ~ 501 a.a) full length recombinant protein with GST tag. |
| Specificity: | Recognizes SERPING1 / C1INH |
| Formulation: | PBS, pH 7.2 State: Purified State: Liquid purified Ig fraction |
| Concentration: | lot specific |
| Purification: | Protein A Chromatography |
| Conjugation: | Unconjugated |
| Storage: | Store the antibody (in aliquots) at -20°C or -80°C. Avoid freeze-thaw cycles. |
| Stability: | Shelf life: one year from despatch. |
| Gene Name: | serpin family G member 1 |
| Database Link: | Entrez Gene 710 Human P05155 |



[View online »](#)

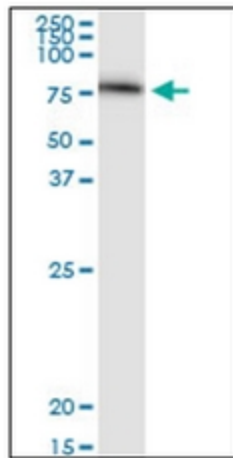
Background: C1NH inhibits activated C1r and C1s of the first complement component and thus regulates the complement activation. Deficiency in C1NH is associated with hereditary angioneurotic edema (HANE).

Synonyms: C1IN, C1NH, C1 Inh, C1Inh

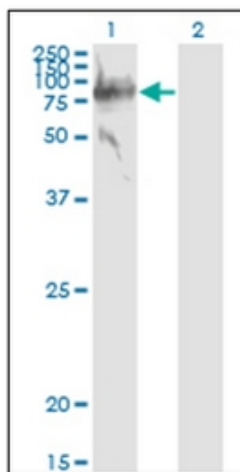
Protein Families: Druggable Genome, Secreted Protein

Protein Pathways: Complement and coagulation cascades

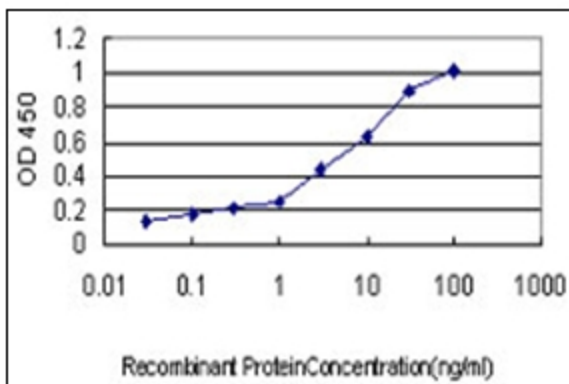
Product images:



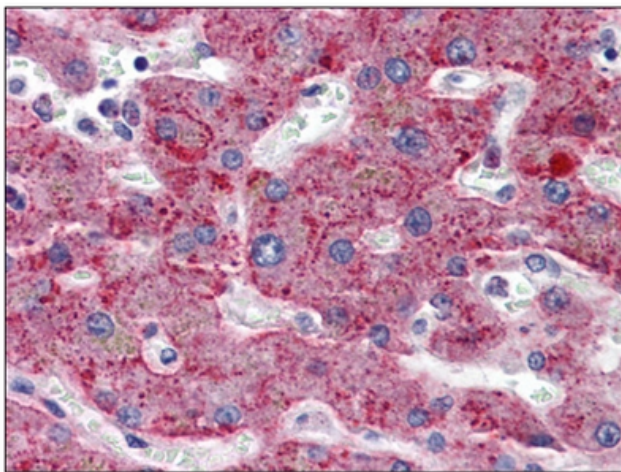
Western Blot analysis of SERPING1 expression in human liver.



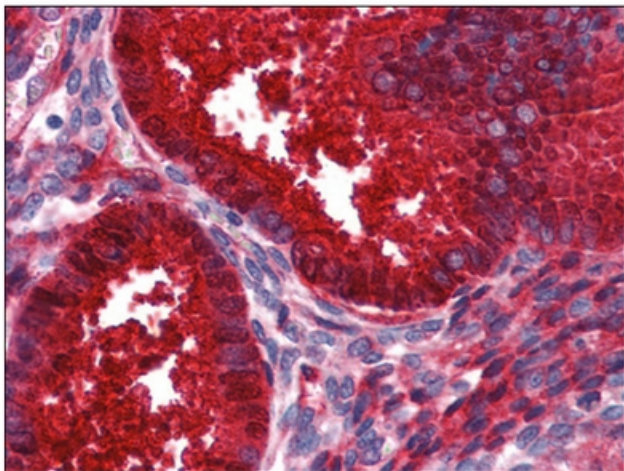
Western Blot analysis of SERPING1 expression in transfected 293T cell line. Lane 1: SERPING1 transfected lysate (Predicted MW: 55.2 KDa). Lane 2: Non-transfected lysate.



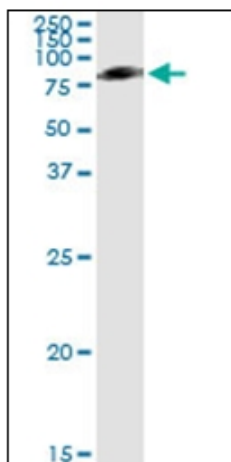
Detection limit for recombinant GST tagged SERPING1 is approximately 0.1ng/ml as a capture antibody.



Human Liver: Formalin-Fixed, Paraffin-Embedded (FFPE)



Human Uterus: Formalin-Fixed, Paraffin-Embedded (FFPE)



Immunoprecipitation of SERPING1 transfected lysate using anti-SERPING1 monoclonal antibody and Protein A Magnetic Bead.