

Product datasheet for **AM31724PU-N**

SERCA3 (ATP2A3) Mouse Monoclonal Antibody [Clone ID: 2H3]

Product data:

| | |
|-----------------------|---|
| Product Type: | Primary Antibodies |
| Clone Name: | 2H3 |
| Applications: | ELISA, IHC, WB |
| Recommended Dilution: | ELISA. Immunohistochemistry on Paraffin Sections: 5 µg/ml. Western Blot: 1/500 - 1/1000. |
| Reactivity: | Human |
| Host: | Mouse |
| Isotype: | IgG2a |
| Clonality: | Monoclonal |
| Immunogen: | ATP2A3 antibody was raised against ATP2A3 (AAH35729, 501 a.a. ~ 621 a.a) partial recombinant protein with GST tag. |
| Specificity: | Recognizes ATP2A3 / SERCA3 |
| Formulation: | PBS, pH 7.2 State: Purified State: Liquid purified Ig fraction |
| Concentration: | lot specific |
| Purification: | Protein A Chromatography |
| Conjugation: | Unconjugated |
| Storage: | Store the antibody (in aliquots) at -20°C or -80°C. Avoid freeze-thaw cycles. |
| Stability: | Shelf life: one year from despatch. |
| Gene Name: | ATPase sarcoplasmic/endoplasmic reticulum Ca ²⁺ transporting 3 |
| Database Link: | Entrez Gene 489 Human Q93084 |



[View online »](#)

Background:

ATP2A3 belongs to the cation transport ATPase (P-type) (TC 3.A.3) family. This magnesium-dependent enzyme catalyzes the hydrolysis of ATP coupled with the transport of calcium. Transports calcium ions from the cytosol into the sarcoplasmic/endoplasmic reticulum lumen. Contributes to calcium sequestration involved in muscular excitation/contraction. Found in most tissues. Most abundant in thymus, trachea, salivary gland, spleen, bone marrow, lymph node, peripheral leukocytes, pancreas and colon. Also detected in fetal tissues.

Synonyms:

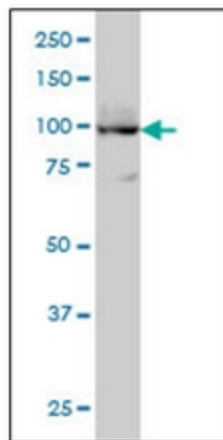
Calcium pump 3 ATPase

Protein Families:

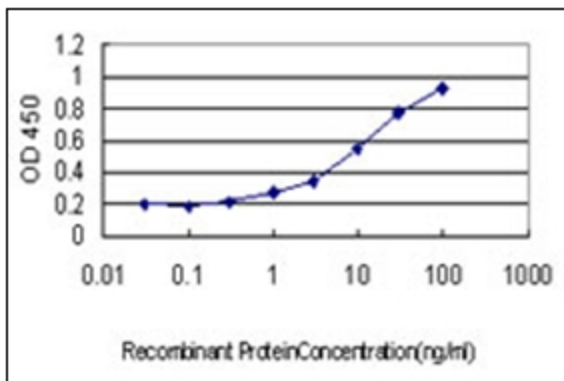
Druggable Genome, Transmembrane

Protein Pathways:

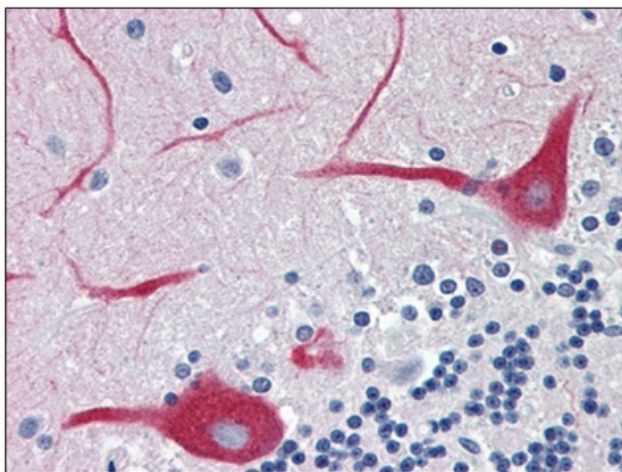
Alzheimer's disease, Calcium signaling pathway

Product images:

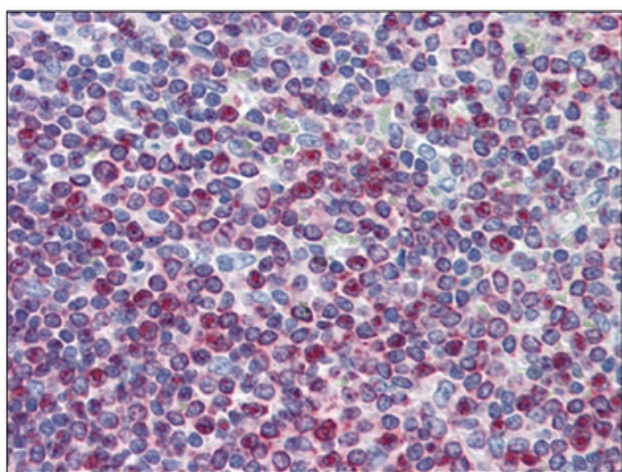
Western Blot analysis of ATP2A3 expression in HL-60 cell lysate.



Detection limit for recombinant GST tagged ATP2A3 is approximately 0.3ng/ml as a capture antibody.



Human Brain, Cerebellum: Formalin-Fixed, Paraffin-Embedded (FFPE)



Human Spleen: Formalin-Fixed, Paraffin-Embedded (FFPE)