

Product datasheet for **AM31718PU-N**

RHOA Mouse Monoclonal Antibody [Clone ID: 1B12]

Product data:

Product Type:	Primary Antibodies
Clone Name:	1B12
Applications:	ELISA, IF, IHC, WB
Recommended Dilution:	ELISA. Immunofluorescence: 10 µg/ml. Immunohistochemistry on Paraffin Sections: 5 µg/ml. Western Blot: 1/500 - 1/1000.
Reactivity:	Human
Host:	Mouse
Isotype:	IgG1
Clonality:	Monoclonal
Immunogen:	RHOA antibody was raised against RHOA (AAH01360, 1 a.a. ~ 194 a.a) full length recombinant protein with GST tag.
Specificity:	Recognizes RhoA.
Formulation:	PBS, pH 7.2 State: Purified State: Liquid purified Ig fraction
Concentration:	lot specific
Purification:	Protein A Chromatography
Conjugation:	Unconjugated
Storage:	Store the antibody (in aliquots) at -20° or -80°C. Avoid freeze-thaw cycles.
Stability:	Shelf life: one year from despatch.
Gene Name:	ras homolog family member A
Database Link:	Entrez Gene 387 Human P61586



[View online »](#)

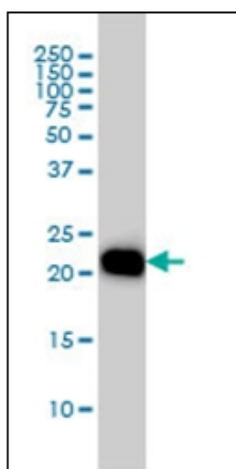
Background: RhoA belongs to the small GTPase superfamily, Rho family, proteins involved in the regulation and timing of cell division. This protein is a small GTPase protein to regulate the actin cytoskeleton in the formation of stress fibers and acts upon two known effector proteins: ROCK1 (Rho-associated, coiled-coil containing protein kinase 1) and DIAPH1 (diaphanous homolog 1 (Drosophila)).

Synonyms: ARH12, ARHA, RHO12

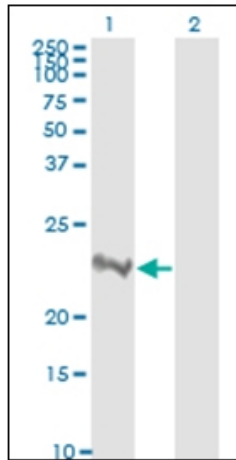
Protein Families: Druggable Genome

Protein Pathways: Adherens junction, Axon guidance, Chemokine signaling pathway, Focal adhesion, Leukocyte transendothelial migration, Neurotrophin signaling pathway, Pathogenic Escherichia coli infection, Pathways in cancer, Regulation of actin cytoskeleton, T cell receptor signaling pathway, TGF-beta signaling pathway, Tight junction, Vascular smooth muscle contraction, Wnt signaling pathway

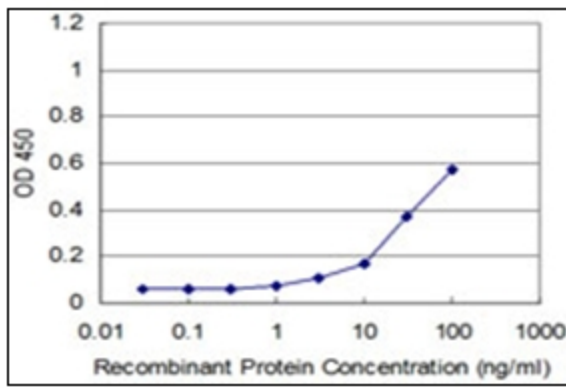
Product images:



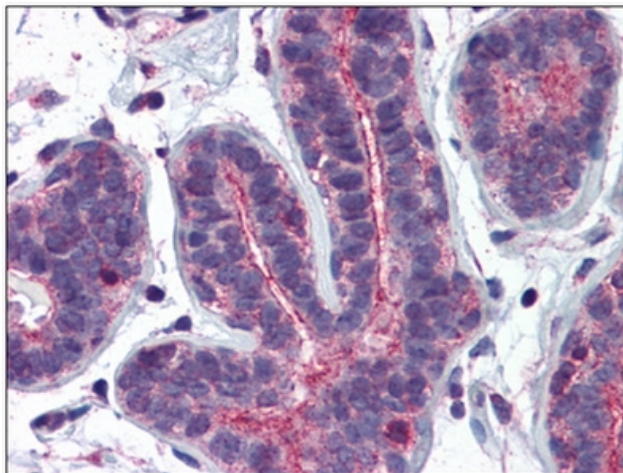
Western Blot analysis of RHOA expression in HL-60 cell lysate.



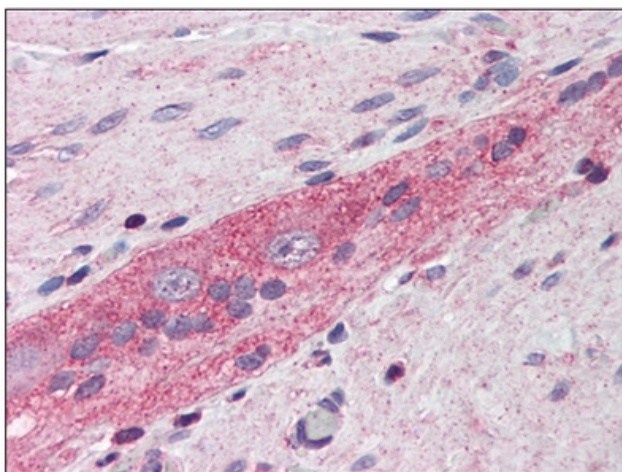
Western Blot analysis of RHOA expression in transfected 293T cell line. Lane 1: RHOA transfected lysate (21.8 KDa). Lane 2: Non-transfected lysate.



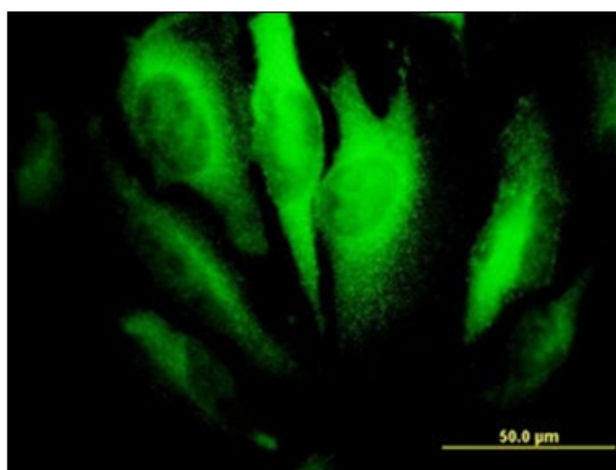
Detection limit for recombinant GST tagged RHOA is approximately 10ng/ml as a capture antibody.



Human Breast: Formalin-Fixed, Paraffin-Embedded (FFPE)



Human Small Intestine, Myenteric Plexus:
Formalin-Fixed, Paraffin-Embedded (FFPE)



Immunofluorescence of monoclonal antibody to
RHOA on HeLa cell at 10 ug/ml.