

## Product datasheet for **AM31714PU-N**

### alpha smooth muscle Actin (ACTA2) Mouse Monoclonal Antibody [Clone ID: 1D11-2B9]

#### Product data:

Product Type:	Primary Antibodies
Clone Name:	1D11-2B9
Applications:	ELISA, IHC, WB
Recommended Dilution:	<b>ELISA.</b> <b>Immunohistochemistry on Paraffin Sections:</b> 5 µg/ml. <b>Western Blot:</b> 1/500 - 1/1000.
Reactivity:	Human
Host:	Mouse
Isotype:	IgG1
Clonality:	Monoclonal
Immunogen:	ACTA2 (AAH17554, 1 a.a. ~ 378 a.a) full-length recombinant protein with GST tag.
Specificity:	Recognizes aortic smooth muscle Actin / ACTA2.
Formulation:	PBS, pH 7.2 State: Purified State: Liquid purified Ig fraction
Concentration:	lot specific
Purification:	Protein A Chromatography
Conjugation:	Unconjugated
Storage:	Store the antibody (in aliquots) at -20°C or lower. Avoid repeated freezing and thawing.
Stability:	Shelf life: one year from despatch.
Gene Name:	actin, alpha 2, smooth muscle, aorta
Database Link:	<a href="#">Entrez Gene 59 Human P62736</a>
Background:	Actin alpha 2, the human aortic smooth muscle actin gene, is one of six different actin isoforms which have been identified. Actins are highly conserved proteins that are involved in cell motility, structure and integrity. Alpha actins are a major constituent of the contractile apparatus.

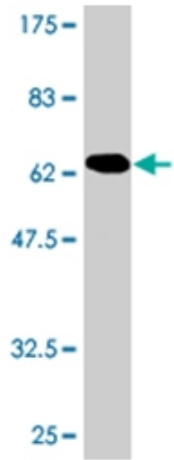


[View online »](#)

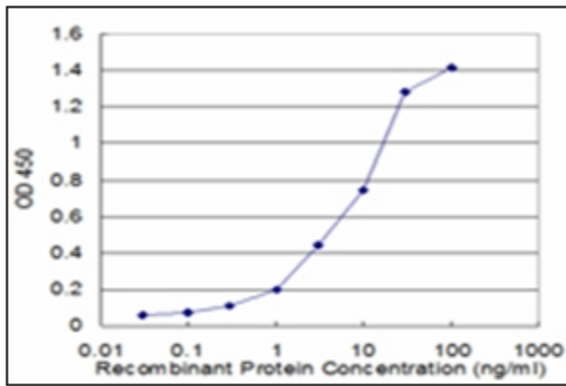
**Synonyms:** ACTSA, ACTVS, Alpha-actin-2

**Protein Pathways:** Vascular smooth muscle contraction

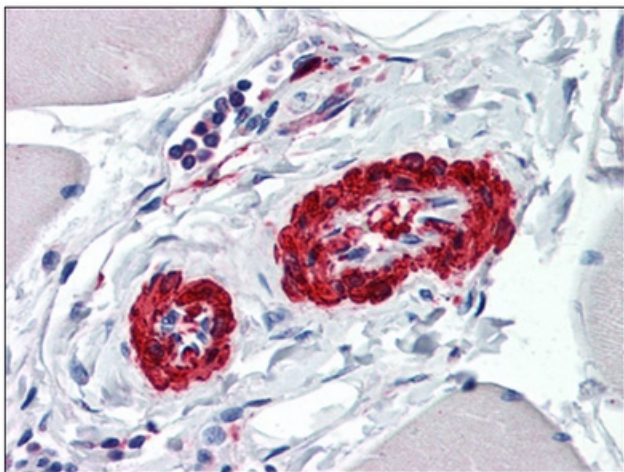
**Product images:**



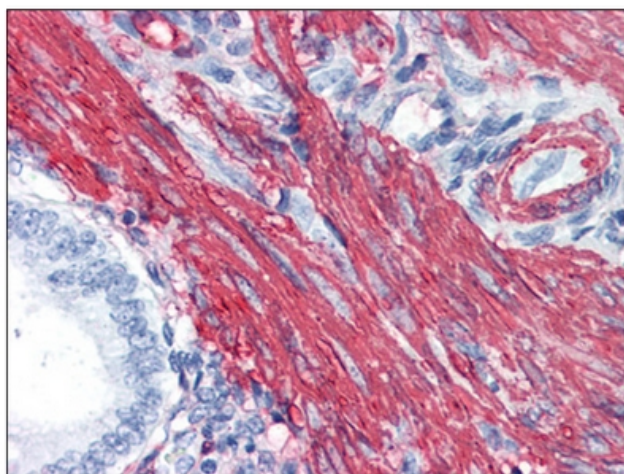
Western Blot detection against Immunogen (67.58 KDa).



Detection limit for recombinant GST tagged ACTA2 is approximately 0.3ng/ml as a capture antibody.



Human Vessels: Formalin-Fixed, Paraffin-Embedded (FFPE)



Human Uterus: Formalin-Fixed, Paraffin-Embedded (FFPE)