

## Product datasheet for **AM31712PU-N**

### Y14 (RBM8A) Mouse Monoclonal Antibody [Clone ID: 3E4]

#### Product data:

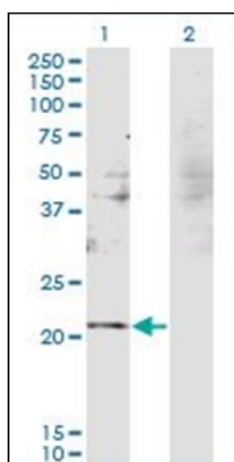
Product Type:	Primary Antibodies
Clone Name:	3E4
Applications:	ELISA, IHC, WB
Recommended Dilution:	<b>ELISA.</b> <b>Immunohistochemistry on Paraffin Sections:</b> 10 µg/ml. <b>Western Blot.</b>
Reactivity:	Human
Host:	Mouse
Isotype:	IgG2b
Clonality:	Monoclonal
Immunogen:	RBM8A antibody was raised against rBM8A (AAH17088, 1 a.a. ~ 175 a.a) full-length recombinant protein with GST tag.
Specificity:	Recognizes RBM8A / RBM8.
Formulation:	PBS, pH 7.2 State: Purified State: Liquid purified Ig fraction
Concentration:	lot specific
Purification:	Protein A Chromatography
Conjugation:	Unconjugated
Storage:	Store the antibody (in aliquots) at -20°C or -80°C. Avoid repeated freezing and thawing.
Stability:	Shelf life: one year from despatch.
Gene Name:	RNA binding motif protein 8A
Database Link:	<a href="#">Entrez Gene 9939 Human Q9Y5S9</a>
Synonyms:	RNA-binding protein 8A, BOV-1, HSPC114, Y14, MDS014
Protein Families:	Druggable Genome



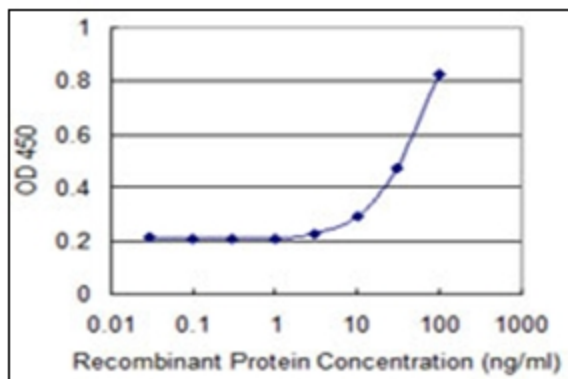
[View online »](#)

Protein Pathways: Spliceosome

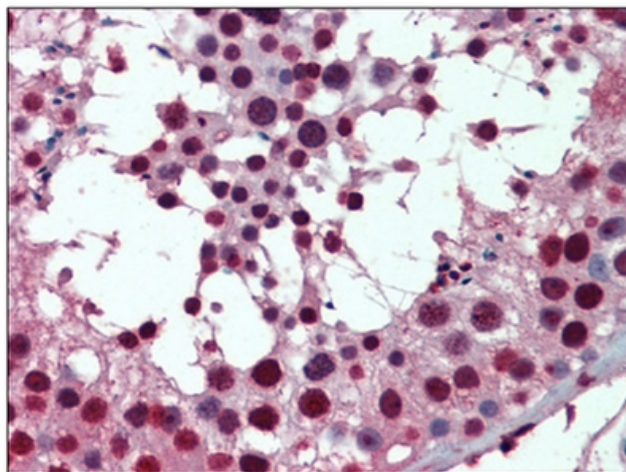
### Product images:



Western Blot analysis of RBM8A expression in transfected 293T cell line by RBM8A monoclonal antibody, clone 3E4. Lane 1: RBM8A transfected lysate (Predicted MW: 19.9 KDa). Lane 2: Non-transfected lysate.



Detection limit for recombinant GST tagged RBM8A is 3 ng/ml as a capture antibody.



Human Testis: Formalin-Fixed, Paraffin-Embedded (FFPE)