

## Product datasheet for **AM31705PU-N**

### Chromogranin A (CHGA) (19-131) Mouse Monoclonal Antibody [Clone ID: 3A5]

#### Product data:

Product Type:	Primary Antibodies
Clone Name:	3A5
Applications:	ELISA, IHC, WB
Recommended Dilution:	<b>ELISA.</b> <b>Immunohistochemistry on Paraffin Sections:</b> 5 µg/ml. <b>Western Blot:</b> 1/500 - 1/1000.
Reactivity:	Human, Mouse
Host:	Mouse
Isotype:	IgG1
Clonality:	Monoclonal
Immunogen:	Recombinant human Chromogranin A (19-131aa) purified from <i>E. coli</i> .
Specificity:	Recognizes CHGA / Chromogranin A.
Formulation:	PBS, pH 7.4 containing 0.09% Sodium Azide as preservative State: Purified State: Liquid purified Ig fraction
Concentration:	lot specific
Purification:	Affinity Chromatography on Protein G
Conjugation:	Unconjugated
Storage:	Store the antibody undiluted at 2-8°C for one month or (in aliquots) at -20°C for longer. Avoid repeated freezing and thawing.
Stability:	Shelf life: one year from despatch.
Gene Name:	chromogranin A
Database Link:	<a href="#">Entrez Gene 12652 Mouse</a> <a href="#">Entrez Gene 1113 Human</a> <a href="#">P10645</a>



[View online »](#)

**Background:**

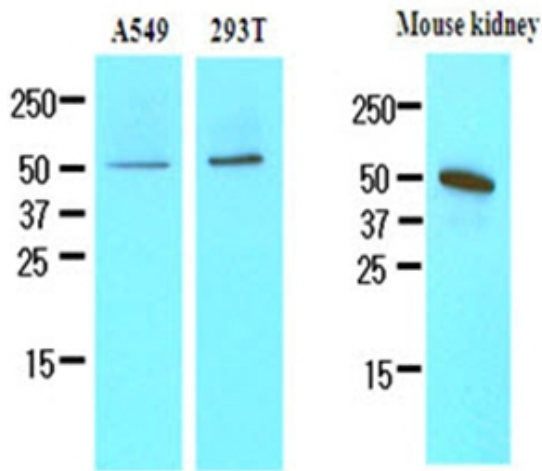
The protein encoded by this gene is a member of the chromogranin/secretogranin family of neuroendocrine secretory proteins. It is found in secretory vesicles of neurons and endocrine cells. This gene product is a precursor to three biologically active peptides; vasostatin, pancreastatin, and parastatin. These peptides act as autocrine or paracrine negative modulators of the neuroendocrine system. Other peptides, including chromostatin, beta-granin, WE-14 and GE-25, are also derived from the full-length protein. However, biological activities for these molecules have not been shown.

**Synonyms:**

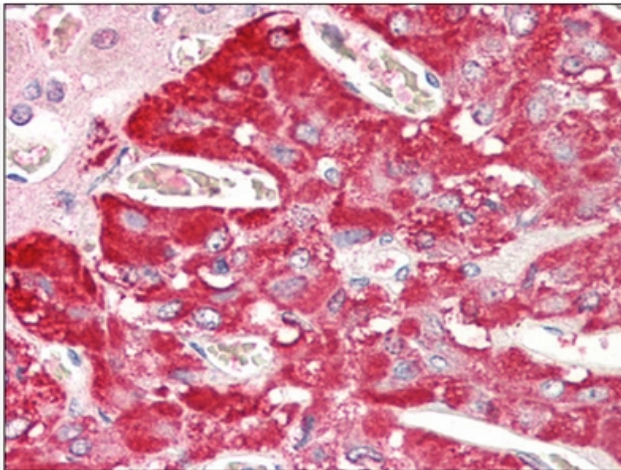
Chromogranin-A, CgA, CHGA, SP-I

**Protein Families:**

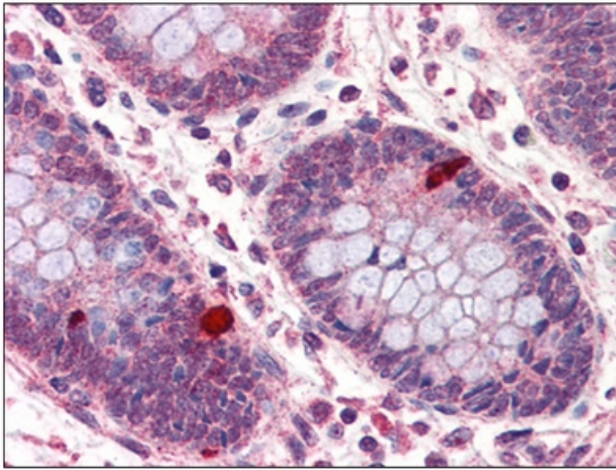
Druggable Genome, Secreted Protein

**Product images:**


Cell lysates of A549, 293T and Mouse kidney (35 ug) were resolved by SDS-PAGE, transferred to NC membrane and probed with anti-human Chromogranin A (1/500). Proteins were visualized using a goat anti-mouse secondary antibody conjugated to HRP and an ECL detection system.



CHGA antibody staining of Formalin-Fixed, Paraffin-Embedded Human Adrenal at 5 ug/ml followed by biotinylated anti-mouse IgG secondary antibody, alkaline phosphatase-streptavidin and chromogen.



CHGA antibody staining of Formalin-Fixed, Paraffin-Embedded Human Colon at 5 ug/ml followed by biotinylated anti-mouse IgG secondary antibody, alkaline phosphatase-streptavidin and chromogen.