

Product datasheet for **AM31699PU-N**

CAPZB (192-272) Mouse Monoclonal Antibody [Clone ID: 1H1]

Product data:

Product Type:	Primary Antibodies
Clone Name:	1H1
Applications:	ELISA, IHC, WB
Recommended Dilution:	ELISA. Immunohistochemistry on Paraffin Sections: 5 µg/ml. Western Blot.
Reactivity:	Human
Host:	Mouse
Isotype:	IgG2a
Clonality:	Monoclonal
Immunogen:	CAPZB (NP_004921, 192 a.a. ~ 272 a.a) partial recombinant protein with GST tag
Specificity:	This antibody recognizes CAPZB at aa 192-272.
Formulation:	PBS, pH 7.4 State: Purified State: Liquid purified Ig fraction
Concentration:	lot specific
Purification:	Affinity Chromatography on Protein A
Conjugation:	Unconjugated
Storage:	Upon receipt, store undiluted (in aliquots) at -20°C. Avoid repeated freezing and thawing.
Stability:	Shelf life: one year from despatch.
Gene Name:	capping actin protein of muscle Z-line beta subunit
Database Link:	Entrez Gene 832 Human P47756



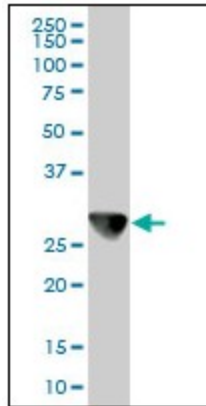
[View online »](#)

Background:

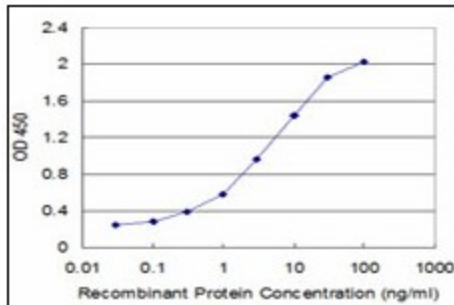
CAPZB / CAPZ Beta is the beta subunit of the barbed-end actin binding protein, which belongs to the F-actin capping protein family. The capping protein is a heterodimeric actin capping protein that blocks actin filament assembly and disassembly at the fast growing (barbed) filament ends and functions in regulating actin filament dynamics as well as in stabilizing actin filament lengths in muscle and nonmuscle cells. A pseudogene of this gene is located on the long arm of chromosome 2.

Synonyms:

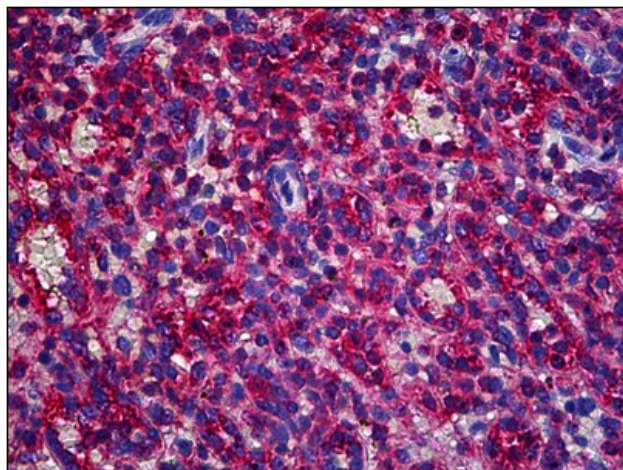
CapZ beta, CAPZ-B

Product images:


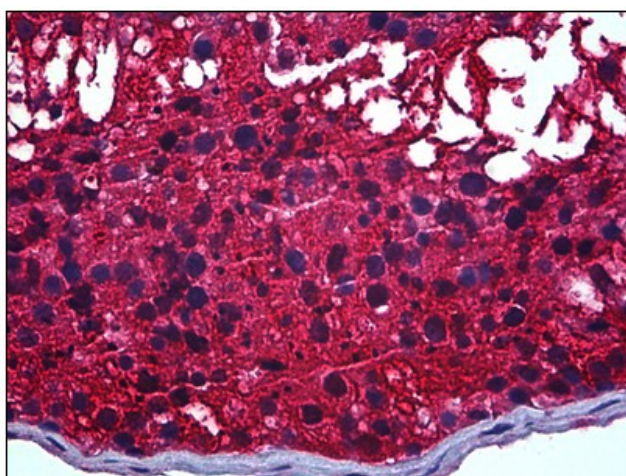
CAPZB monoclonal antibody, clone 1H1. Western Blot analysis of CAPZB expression in HeLa.



Detection limit for recombinant GST tagged CAPZB is approximately 0.1ng/ml as a capture antibody.



Human Spleen: Formalin-Fixed, Paraffin-Embedded (FFPE)



Human Testis: Formalin-Fixed, Paraffin-Embedded (FFPE)