

## Product datasheet for **AM31698PU-N**

### Osteopontin (SPP1) Mouse Monoclonal Antibody [Clone ID: X1]

#### Product data:

Product Type:	Primary Antibodies
Clone Name:	X1
Applications:	ELISA, IHC, WB
Recommended Dilution:	<b>ELISA.</b> <b>Immunohistochemistry on Paraffin Sections:</b> 5 µg/ml. <b>Western Blot.</b>
Reactivity:	Human
Host:	Mouse
Isotype:	IgG2b
Clonality:	Monoclonal
Immunogen:	Recombinant Human Osteopontin protein
Specificity:	This antibody reacts to SPP1 / Osteopontin.
Formulation:	PBS, pH 7.2 State: Purified State: Liquid purified Ig fraction
Concentration:	lot specific
Purification:	Affinity chromatography on Protein A
Conjugation:	Unconjugated
Storage:	Store the antibody undiluted at 2-8°C for one month or (in aliquots) at -20°C for longer. Avoid repeated freezing and thawing.
Stability:	Shelf life: one year from despatch.
Gene Name:	secreted phosphoprotein 1
Database Link:	<a href="#">Entrez Gene 4627 Human</a> <a href="#">Entrez Gene 6696 Human P10451</a>
Background:	Osteopontin (OPN) is an integrin-binding protein overexpressed in various experimental models of malignancy and appears to be involved in tumorigenesis and metastasis.
Synonyms:	BNSP, OPN, SPP-1, Nephropontin, Uropontin

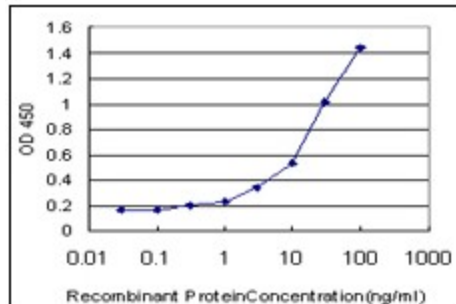


[View online »](#)

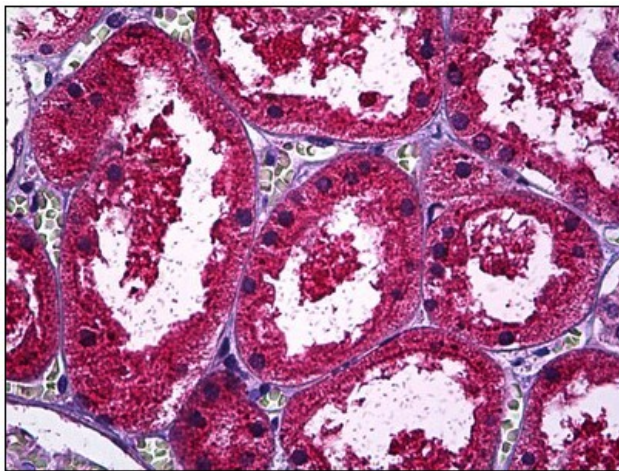
Protein Families: Druggable Genome

Protein Pathways: Regulation of actin cytoskeleton, Tight junction, Viral myocarditis

### Product images:



Detection limit for recombinant GST tagged SPP1 is approximately 0.3ng/ml as a capture antibody.



Human Kidney, Tubules: Formalin-Fixed, Paraffin-Embedded (FFPE)