

Product datasheet for **AM31697PU-N**

Lymphotactin (XCL1) (22-114) Mouse Monoclonal Antibody [Clone ID: 1E1]

Product data:

Product Type:	Primary Antibodies
Clone Name:	1E1
Applications:	ELISA, IHC, WB
Recommended Dilution:	ELISA. Immunohistochemistry on Paraffin Sections: 5 µg/ml. Western Blot.
Reactivity:	Human
Host:	Mouse
Isotype:	IgG2a
Clonality:	Monoclonal
Immunogen:	xCL1 (NP_002986, 22 a.a. ~ 114 a.a) partial recombinant protein with GST tag
Specificity:	Recognizes Human XCL1 / Lymphotactin.
Formulation:	PBS, pH 7.4 State: Purified State: Liquid purified Ig fraction
Concentration:	lot specific
Purification:	Protein A Chromatography
Conjugation:	Unconjugated
Storage:	Store the antibody undiluted at 2-8°C for one month or (in aliquots) at -20°C for longer. Avoid repeated freezing and thawing.
Stability:	Shelf life: one year from despatch.
Gene Name:	X-C motif chemokine ligand 1
Database Link:	Entrez Gene 4627 Human Entrez Gene 6375 Human P47992



[View online »](#)

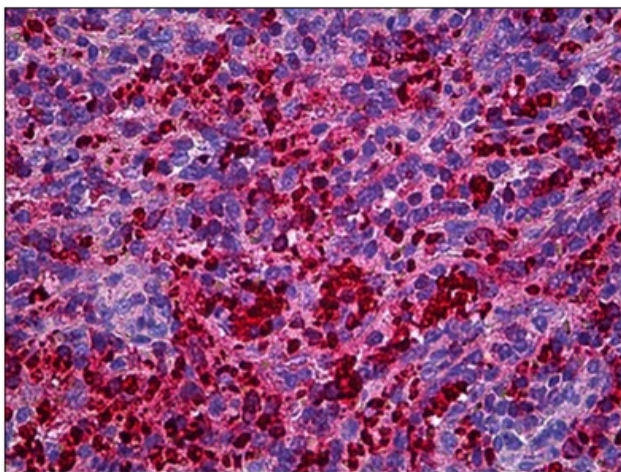
Background: Lymphotactin, also known as XCL1, is member of gamma or C subfamily of chemokines. It is found in high levels in spleen, thymus, intestine and peripheral blood leukocytes, and at lower levels in lung, prostate gland and ovary. The expression of lymphotactin is restricted to activated T cells such as activated CD8+ T cells and other calss IMHC restricted T cells. Since lymphotactin is produced by lymphocytes and acts on lymphocytes, it is speculated that it is a messenger in T cell chemoattraction.

Synonyms: LTN, Lymphotaxin, ATAC, SCM-1-alpha, SCYC1

Protein Families: Druggable Genome

Protein Pathways: Regulation of actin cytoskeleton, Tight junction, Viral myocarditis

Product images:



Human Spleen: Formalin-Fixed, Paraffin-Embedded (FFPE)