

Product datasheet for **AM31696PU-N**

myosin heavy chain 9 (MYH9) Mouse Monoclonal Antibody [Clone ID: 2B3]

Product data:

Product Type:	Primary Antibodies
Clone Name:	2B3
Applications:	ELISA, IF, IHC, WB
Recommended Dilution:	ELISA. Immunofluorescence: 10 µg/ml. Immunohistochemistry on Paraffin Sections: 5 µg/ml. Western Blot.
Reactivity:	Human
Host:	Mouse
Isotype:	IgG2b
Clonality:	Monoclonal
Immunogen:	Recombinant protein
Specificity:	This antibody reacts to Human MYH9.
Formulation:	PBS, pH 7.4 State: Aff - Purified State: Liquid purified Ig fraction
Concentration:	lot specific
Purification:	Affinity chromatography on Protein A
Conjugation:	Unconjugated
Storage:	Store the antibody undiluted at 2-8°C for one month or (in aliquots) at -20°C for longer. Avoid repeated freezing and thawing.
Stability:	Shelf life: one year from despatch.
Gene Name:	myosin, heavy chain 9, non-muscle
Database Link:	Entrez Gene 4627 Human P35579



[View online »](#)

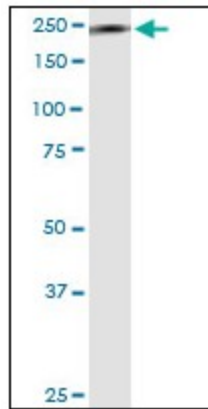
Background: MYH9 is a conventional non-muscle myosin; this protein should not be confused with the unconventional myosin-9a or 9b (MYO9A or MYO9B). The encoded protein is a myosin IIA heavy chain that contains an IQ domain and a myosin head-like domain which is involved in several important functions, including cytokinesis, cell motility and maintenance of cell shape.

Synonyms: Myosin heavy chain 9, Myosin heavy chain, non-muscle Ila, Non-muscle myosin heavy chain Ila, Cellular myosin heavy chain, type A, Non-muscle myosin heavy chain A

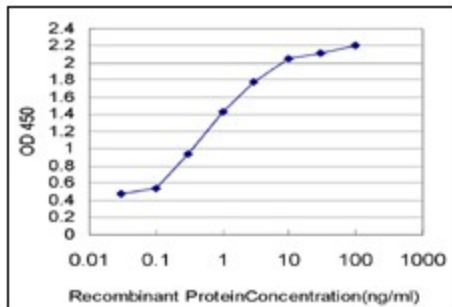
Protein Families: Druggable Genome

Protein Pathways: Regulation of actin cytoskeleton, Tight junction, Viral myocarditis

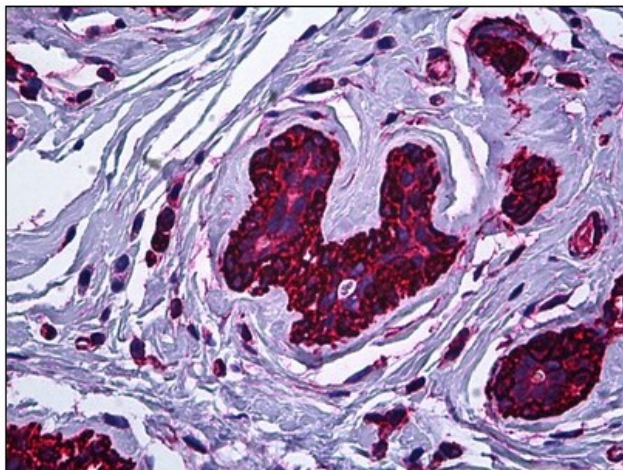
Product images:



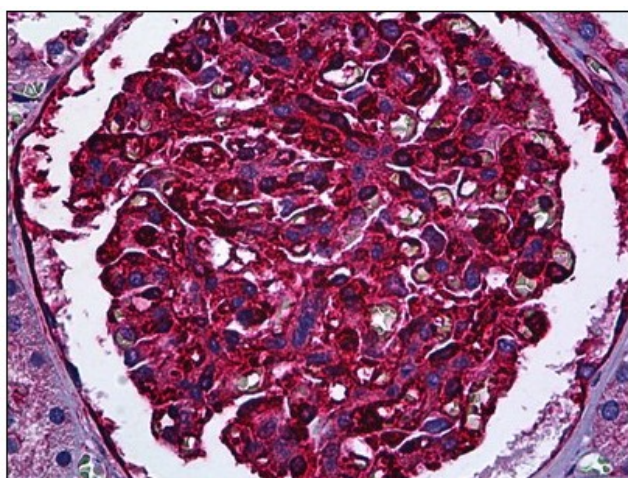
MYH9 monoclonal antibody, clone 2B3. Western Blot analysis of MYH9 expression in human kidney.



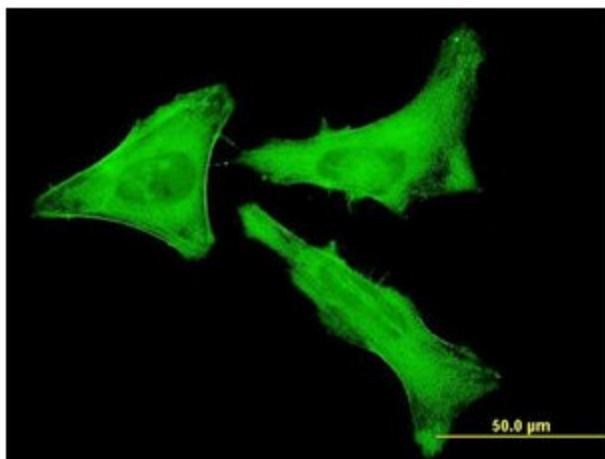
Detection limit for recombinant GST tagged MYH9 is approximately 0.03ng/ml as a capture antibody.



Human Breast: Formalin-Fixed, Paraffin-Embedded (FFPE)



Human Kidney, Glomeruli: Formalin-Fixed, Paraffin-Embedded (FFPE)



Immunofluorescence of monoclonal antibody to MYH9 on HeLa cell. [antibody concentration 10 ug/ml]