

Product datasheet for **AM31695PU-N**

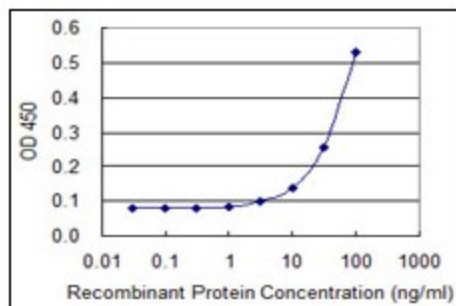
CELA1 Mouse Monoclonal Antibody [Clone ID: 4H5]

Product data:

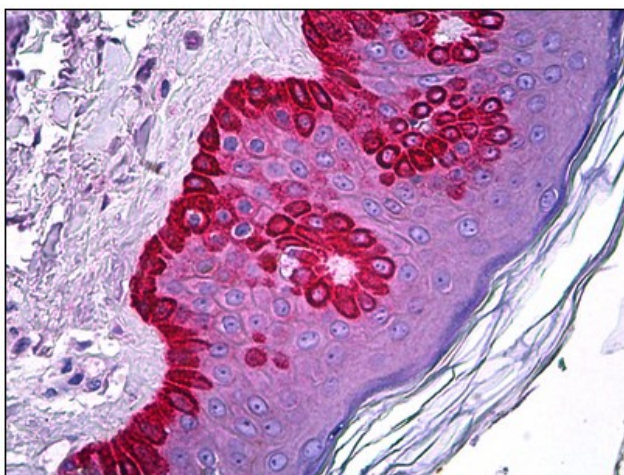
Product Type:	Primary Antibodies
Clone Name:	4H5
Applications:	ELISA, IHC, WB
Recommended Dilution:	ELISA. Immunohistochemistry on Paraffin Sections: 5 µg/ml. Western Blot.
Reactivity:	Human
Host:	Mouse
Isotype:	IgG2a
Clonality:	Monoclonal
Immunogen:	Recombinant protein
Specificity:	This antibody reacts to CELA1.
Formulation:	PBS, pH 7.2 State: Purified State: Liquid purified Ig fraction
Concentration:	lot specific
Purification:	Affinity chromatography on Protein A
Conjugation:	Unconjugated
Storage:	Store the antibody undiluted at 2-8°C for one month or (in aliquots) at -20°C for longer. Avoid repeated freezing and thawing.
Stability:	Shelf life: one year from despatch.
Gene Name:	chymotrypsin like elastase family member 1
Database Link:	Entrez Gene 1990 Human Q9UNI1
Synonyms:	ELA1, CELA1
Protein Families:	Druggable Genome, Protease, Secreted Protein



[View online »](#)

Product images:

Detection limit for recombinant GST tagged ELA1 is 3 ng/ml as a capture antibody.



Human Skin: Formalin-Fixed, Paraffin-Embedded (FFPE)