

Product datasheet for **AM31694PU-N**

Collagen I (COL1A1) (1021-1108) Mouse Monoclonal Antibody [Clone ID: 3G3]

Product data:

Product Type:	Primary Antibodies
Clone Name:	3G3
Applications:	ELISA, IHC, WB
Recommended Dilution:	ELISA IHC-P (5 µg/ml) WB
Reactivity:	Human, Mouse
Host:	Mouse
Isotype:	IgG3, kappa
Clonality:	Monoclonal
Immunogen:	Amino acids 1021-1108 of NP_000079.1
Specificity:	Human COL1A1
Formulation:	PBS, pH 7.4
Concentration:	lot specific
Purification:	Purified from ascites by Protein A
Conjugation:	Unconjugated
Storage:	Store at -20°C or lower. Aliquot to avoid freeze-thaw cycles.
Stability:	12 months from date of despatch
Gene Name:	collagen type I alpha 1
Database Link:	Entrez Gene 12842 Mouse Entrez Gene 1277 Human P02452
Background:	Collagen I Alpha 1 antibody LS-B5932 is an unconjugated mouse monoclonal antibody to Collagen I Alpha 1 (COL1A1) from human. It is reactive with human and mouse. Validated for ELISA, IHC and WB. Cited in 4 publications.
Synonyms:	COL1A1, Alpha-1 type I collagen, Collagen alpha 1 chain type I, Collagen alpha-1(I) chain, Collagen, type I, alpha 1, Collagen I, Pro-alpha-1 collagen type 1, OI4



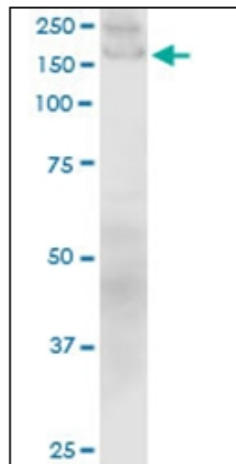
[View online »](#)

Note: Immunohistochemistry: Formalin-fixed paraffin-embedded sections. Sandwich ELISA: Recombinant protein. Western Blot using cell line lysates and the recombinant protein used as the immunogen.

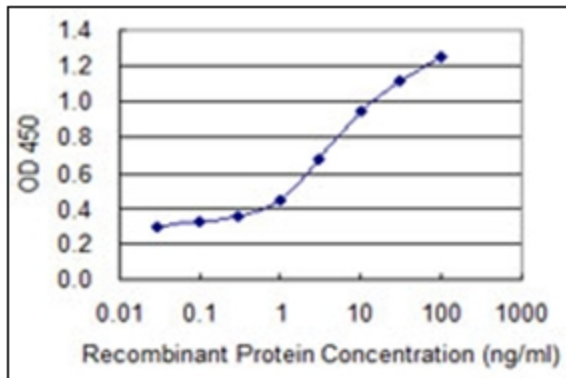
Protein Families: Druggable Genome

Protein Pathways: ECM-receptor interaction, Focal adhesion

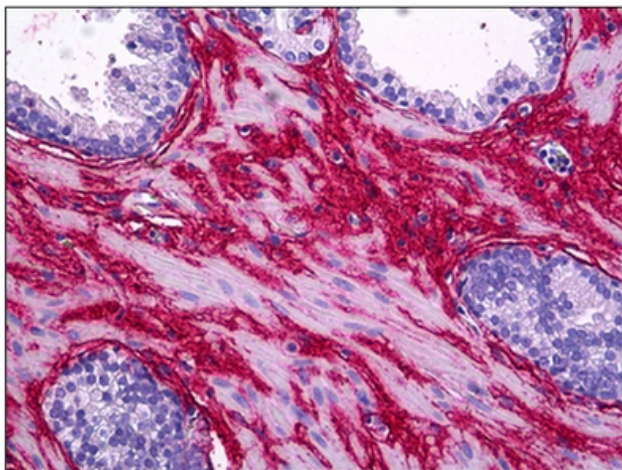
Product images:



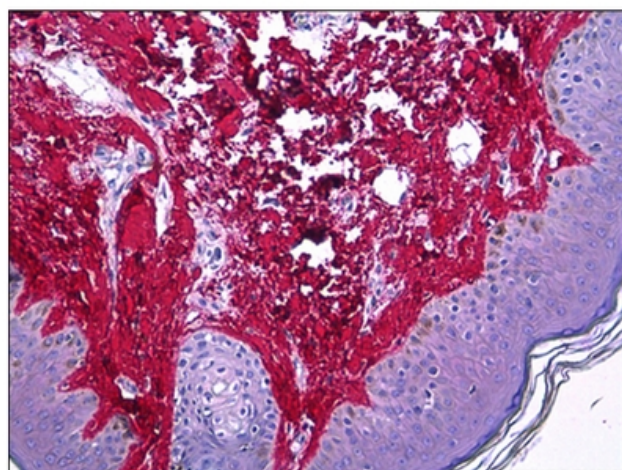
Western Blot analysis of COL1A1 expression in NIH/3T3 using COL1A1 monoclonal antibody clone 3G3



Detection limit for recombinant GST tagged COL1A1 is 0.03 ng/ml as a capture antibody



Formalin-Fixed, Paraffin-Embedded Human Prostate stained with COL1A1 Antibody at 5 ug/ml after heat-induced antigen retrieval



Formalin-Fixed, Paraffin-Embedded Human Skin stained with COL1A1 Antibody at 5 ug/ml after heat-induced antigen retrieval