

Product datasheet for **AM31693PU-N**

ATP6V1A Mouse Monoclonal Antibody [Clone ID: 4F5]

Product data:

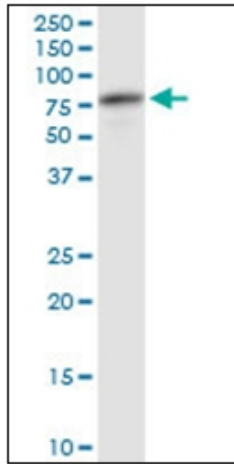
Product Type:	Primary Antibodies
Clone Name:	4F5
Applications:	ELISA, IHC, WB
Recommended Dilution:	ELISA. Immunohistochemistry on Paraffin Sections: 5 µg/ml. Western Blot: 1/500 - 1/1000.
Reactivity:	Human
Host:	Mouse
Isotype:	IgG1
Clonality:	Monoclonal
Immunogen:	Recombinant Human ATP6V1A
Specificity:	Recognizes ATP6V1A
Formulation:	PBS, pH 7.2 State: Purified State: Liquid purified Ig fraction
Concentration:	lot specific
Purification:	Protein A Chromatography
Conjugation:	Unconjugated
Storage:	Store the antibody undiluted at 2-8°C for one month or (in aliquots) at -20°C for longer. Avoid repeated freezing and thawing.
Stability:	Shelf life: one year from despatch.
Gene Name:	ATPase H ⁺ transporting V1 subunit A
Database Link:	Entrez Gene 523 Human P38606
Synonyms:	V-ATPase subunit A, ATP6A1, ATP6V1A1, VPP2
Protein Families:	Druggable Genome



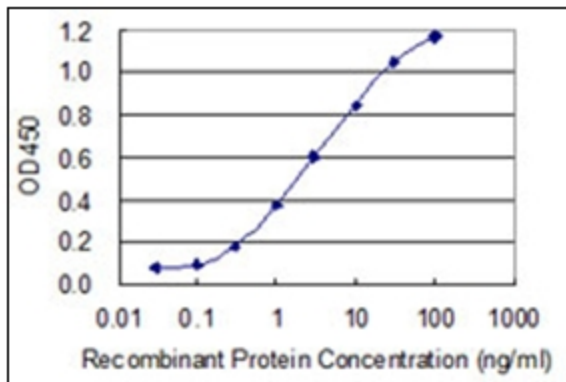
[View online »](#)

Protein Pathways: Epithelial cell signaling in Helicobacter pylori infection, Metabolic pathways, Oxidative phosphorylation, Vibrio cholerae infection

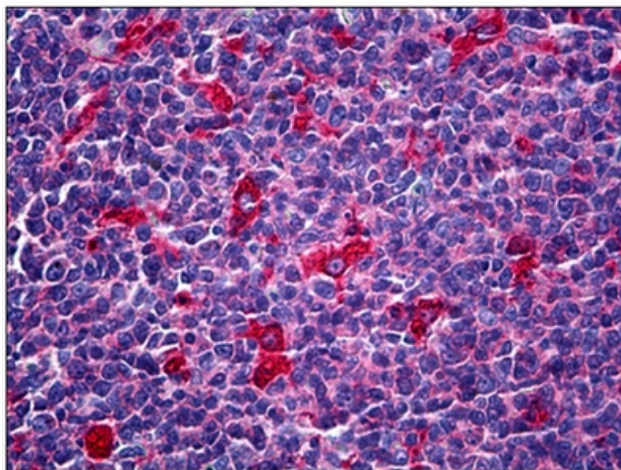
Product images:



Western Blot analysis of ATP6V1A expression in human kidney using ATP6V1A monoclonal antibody (clone 4F5)



Detection limit for recombinant GST tagged ATP6V1A is 0.03 ng/ml as a capture antibody



Human Tonsil: Formalin-Fixed, Paraffin-Embedded (FFPE)