

Product datasheet for **AM31692PU-N**

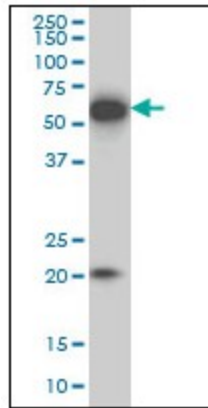
EBF3 Mouse Monoclonal Antibody [Clone ID: 8D6]

Product data:

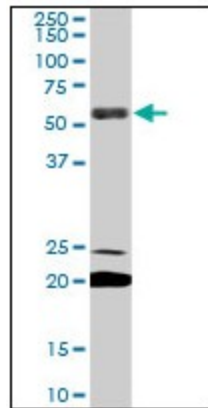
Product Type:	Primary Antibodies
Clone Name:	8D6
Applications:	ELISA, IHC, WB
Recommended Dilution:	ELISA. Immunohistochemistry on Paraffin Sections: 5 µg/ml. Western Blot: 1/500 - 1/1000.
Reactivity:	Human, Mouse
Host:	Mouse
Isotype:	IgG1
Clonality:	Monoclonal
Immunogen:	Recombinant Human EBF3 protein
Specificity:	This antibody reacts to EBF3.
Formulation:	PBS, pH 7.2 State: Purified State: Liquid purified Ig fraction
Concentration:	lot specific
Purification:	Affinity chromatography on Protein A
Conjugation:	Unconjugated
Storage:	Store undiluted at 2-8°C for one month or (in aliquots) at -20°C for longer. Avoid repeated freezing and thawing.
Stability:	Shelf life: one year from despatch.
Gene Name:	early B-cell factor 3
Database Link:	Entrez Gene 130497 Human Entrez Gene 253738 Human Q9H4W6
Synonyms:	Early B-cell factor 3, EBF-3, Olf-1/EBF-like 2, O/E-2, OE-2



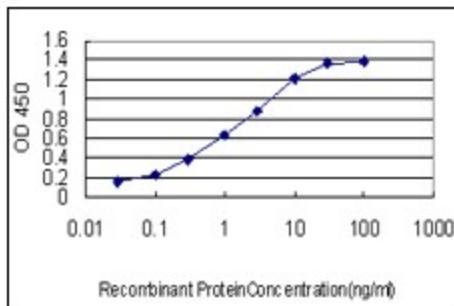
[View online »](#)

Product images:


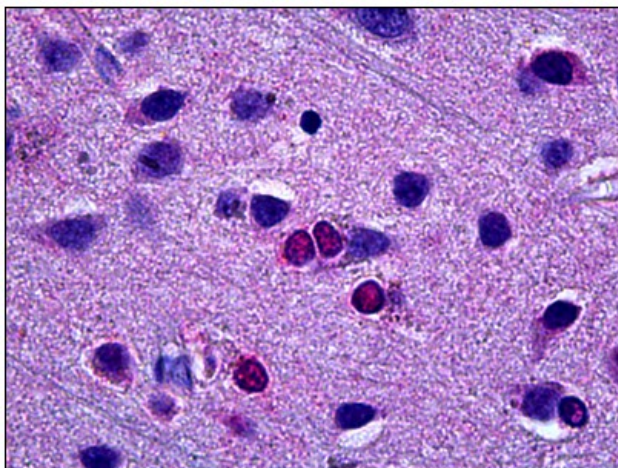
EBF3 monoclonal antibody, clone 8D6 Western Blot analysis of EBF3 expression in IMR-32.



EBF3 monoclonal antibody, clone 8D6. Western Blot analysis of EBF3 expression in NIH/3T3.



Detection limit for recombinant GST tagged EBF3 is approximately 0.03ng/ml as a capture antibody.



Human Brain, Cortex: Formalin-Fixed, Paraffin-Embedded (FFPE)