

Product datasheet for **AM31485AF-N**

GPC1 Mouse Monoclonal Antibody [Clone ID: B485M]

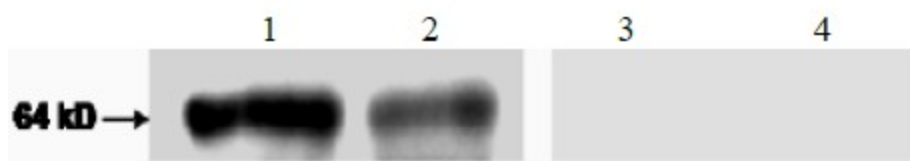
Product data:

Product Type:	Primary Antibodies
Clone Name:	B485M
Applications:	ELISA, IF, WB
Recommended Dilution:	ELISA: 1 - 5 µg/ml. Immunoblotting: 1 - 10 µg/ml. Immunofluorescence: 1 - 10 µg/ml.
Reactivity:	Human
Host:	Mouse
Isotype:	IgG1
Clonality:	Monoclonal
Immunogen:	Recombinant full-length human glypican-1
Specificity:	This antibody recognizes native and recombinant glypican-1.
Formulation:	PBS, pH 7.4 without preservatives State: Azide Free State: Liquid purified Ig fraction
Concentration:	lot specific
Purification:	Affinity chromatography on Protein G
Conjugation:	Unconjugated
Storage:	Store the antibody at -20°C. Avoid repeated freezing and thawing.
Stability:	Shelf life: one year from despatch.
Gene Name:	glypican 1
Database Link:	Entrez Gene 2817 Human P35052
Synonyms:	FLJ38078; glypican
Protein Families:	Druggable Genome



[View online »](#)

Product images:



A band of approximately 64kDa is detected in normal mouse brain extract. Lane 1: 5 ug/ml
Lane 2: 1 ug/ml Lane 3: Isotype control 5 ug/ml
Lane 4: Isotype control 1 ug/ml