

## Product datasheet for **AM31374AF-N**

### IL6 Mouse Monoclonal Antibody [Clone ID: n.a]

#### Product data:

Product Type:	Primary Antibodies
Clone Name:	n.a
Applications:	FC, IHC, WB
Recommended Dilution:	<b>Flow Cytometry.</b> <b>Immunohistochemistry on Paraffin Sections:</b> 10 µg/ml. <b>Western Blot:</b> 0.1 - 1 µg/ml.
Reactivity:	Rat
Host:	Mouse
Isotype:	IgG2b
Clonality:	Monoclonal
Immunogen:	Purified Recombinant Rat IL-6 protein.
Specificity:	Recognizes Interleukin 6 (IL-6).
Formulation:	PBS, pH 7.2 without stabilizers or preservatives. State: Azide Free State: Liquid purified IgG fraction
Concentration:	lot specific
Purification:	Protein G Chromatography
Conjugation:	Unconjugated
Storage:	Store the antibody undiluted at 2-8°C for one month or (in aliquots) at -20°C for longer. Avoid repeated freezing and thawing.
Stability:	Shelf life: one year from despatch.
Gene Name:	interleukin 6
Database Link:	<a href="#">Entrez Gene 24498 Rat P20607</a>



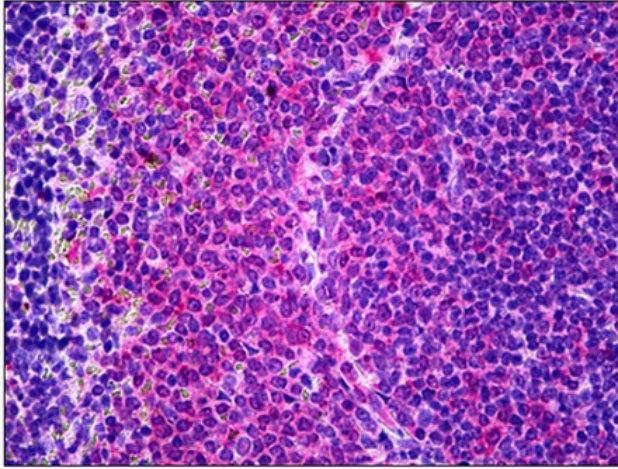
[View online »](#)

**Background:**

Interleukin-6 (IL6) is a cytokine that functions in inflammation and the maturation of B cells. The protein is primarily produced at sites of acute and chronic inflammation, where it is secreted into the serum and induces a transcriptional inflammatory response through interleukin 6 receptor, alpha. The functioning of this IL6 is implicated in a wide variety of inflammation-associated disease states, including susceptibility to diabetes mellitus and systemic juvenile rheumatoid arthritis.

**Synonyms:**

IL-6, Interferon beta-2, IFNB2, B-cell stimulatory factor 2, BSF-2, CDF

**Product images:**

Rat Spleen: Formalin-Fixed, Paraffin-Embedded (FFPE)