

Product datasheet for **AM31357AF-N**

IL6R Mouse Monoclonal Antibody [Clone ID: B-R6]

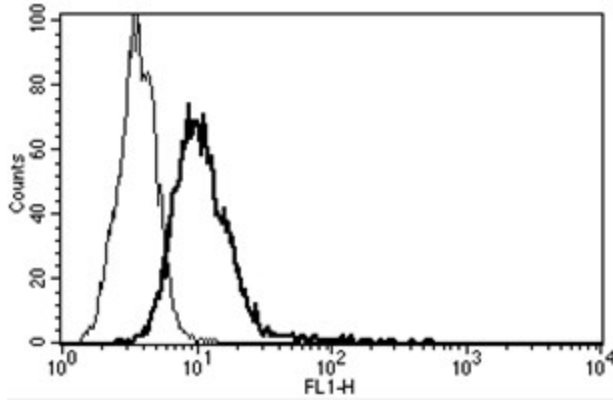
Product data:

Product Type:	Primary Antibodies
Clone Name:	B-R6
Applications:	FC, FN, IHC, IP
Recommended Dilution:	ELISA. Flow Cytometry. Immunoprecipitation. Immunohistochemistry on Frozen Sections. Functional Assay: Blocks IL-6 induced proliferation of XG-1 cells. Inhibits IL-6 binding to its receptor.
Reactivity:	Human
Host:	Mouse
Isotype:	IgG1
Clonality:	Monoclonal
Immunogen:	gp80 transfected CHO cell line
Specificity:	This antibody recognises the Interleukin-6 Ra subunit, IL-6 Ra, IL-6 R, a 80 kDa protein.
Formulation:	Phosphate-buffered saline. Sterile-filtered through 0.22 µm and treated to remove endotoxins. Carrier and preservative free State: Azide Free State: Liquid purified IgG fraction
Concentration:	lot specific
Purification:	Ion Exchange Chromatography
Conjugation:	Unconjugated
Storage:	Store the antibody undiluted at 2-8°C.
Stability:	Shelf life: one year from despatch.
Gene Name:	interleukin 6 receptor
Database Link:	Entrez Gene 3570 Human P08887



[View online »](#)

Synonyms:	Interleukin-6 receptor subunit alpha, IL-6R-alpha, IL-6R 1, IL6 Receptor alpha
Protein Families:	Druggable Genome, ES Cell Differentiation/IPS, Transmembrane
Protein Pathways:	Cytokine-cytokine receptor interaction, Hematopoietic cell lineage, Jak-STAT signaling pathway

Product images:

A typical staining pattern with the B-R6 monoclonal antibody of U266 cell line