

## Product datasheet for **AM31356FC-N**

### Thrombomodulin (THBD) Mouse Monoclonal Antibody [Clone ID: B-A35]

#### Product data:

Product Type:	Primary Antibodies
Clone Name:	B-A35
Applications:	FC
Recommended Dilution:	<b>Flow Cytometry:</b> Use 10 µl to label 10e6 cells or 100 µl of whole blood.
Reactivity:	Human
Host:	Mouse
Isotype:	IgG1
Clonality:	Monoclonal
Immunogen:	TF1 cell line.
Specificity:	Recognises the soluble antigen. Recognises Thrombomodulin (TM), a 105 kDa protein.
Formulation:	PBS containing 5% BSA as stabilizer and 0.09% Sodium Azide as preservative Label: FITC State: Liquid purified IgG fraction
Purification:	Ion Exchange Chromatography
Conjugation:	FITC
Storage:	Store the antibody undiluted at 2-8°C.
Stability:	Shelf life: one year from despatch.
Gene Name:	thrombomodulin
Database Link:	<a href="#">Entrez Gene 7056 Human P07204</a>
Background:	CD141/Thrombomodulin is an exclusively endothelial cell surface glycoprotein that forms a 1:1 complex with thrombin. Binding of thrombin to this high-affinity receptor alters its specificity toward several substrates. The complex activates protein C approximately 1000 times faster than thrombin alone. Activated protein C degrades clotting factors V and VIII; thus, thrombomodulin converts thrombin into a physiologic anticoagulant. Thrombomodulin is also found in the circulatory and urinary systems, the physiologic significance of this is obscure.



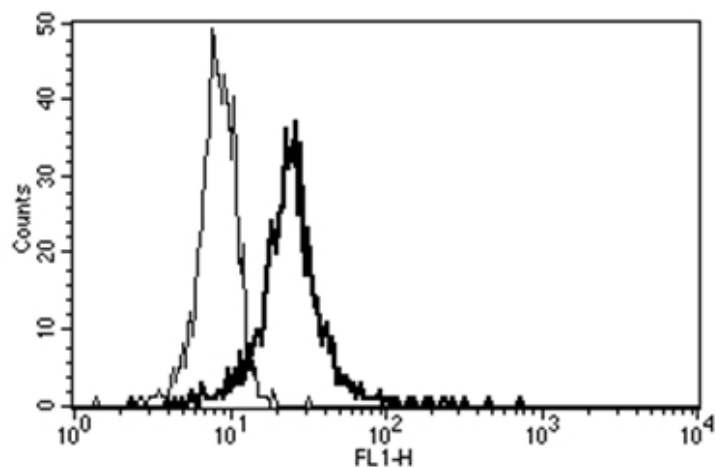
[View online »](#)

Synonyms: Thrombomodulin, THRM, Fetomodulin

Protein Families: Druggable Genome, Transmembrane

Protein Pathways: Complement and coagulation cascades

### Product images:



A typical staining pattern with the B-A35 monoclonal antibody of monocytes.