

Product datasheet for **AM31350PU-N**

CD130 (IL6ST) Mouse Monoclonal Antibody [Clone ID: B-R3]

Product data:

| | |
|-----------------------|--|
| Product Type: | Primary Antibodies |
| Clone Name: | B-R3 |
| Applications: | FC |
| Recommended Dilution: | Flow Cytometry: Use 10 µl to label 10e6 cells in 100 µl of whole blood. |
| Reactivity: | Human |
| Host: | Mouse |
| Isotype: | IgG2a |
| Clonality: | Monoclonal |
| Immunogen: | Natural soluble gp130. |
| Specificity: | Recognises the Gp130, common subunit for IL-6, IL-11, OSM, LIF, CNTF, CT-1 receptors, a 130-140 kDa protein. |
| Formulation: | PBS containing 0.09% Sodium Azide as preservative and 1% BSA as stabilizer State: Purified State: Liquid purified IgG fraction |
| Purification: | Ion Exchange Chromatography |
| Conjugation: | Unconjugated |
| Storage: | Store the antibody undiluted at 2-8°C. |
| Stability: | Shelf life: one year from despatch. |
| Gene Name: | interleukin 6 signal transducer |
| Database Link: | Entrez Gene 3572 Human P40189 |



[View online »](#)

Background:

CD130 is a signal transducer shared by many cytokines, including interleukin 6 (IL6), ciliary neurotrophic factor (CNTF), leukemia inhibitory factor (LIF), and oncostatin M (OSM). This protein functions as a part of the cytokine receptor complex. The activation of this protein is dependent upon the binding of cytokines to their receptors. vIL6, a protein related to IL6 and encoded by the Kaposi sarcoma-associated herpesvirus, can bypass the interleukin 6 receptor (IL6R) and directly activate this protein. Knockout studies in mice suggested a critical role of the gene encoding this protein in regulating myocyte apoptosis. Alternatively spliced transcript variants encoding distinct isoforms have been described.

Synonyms:

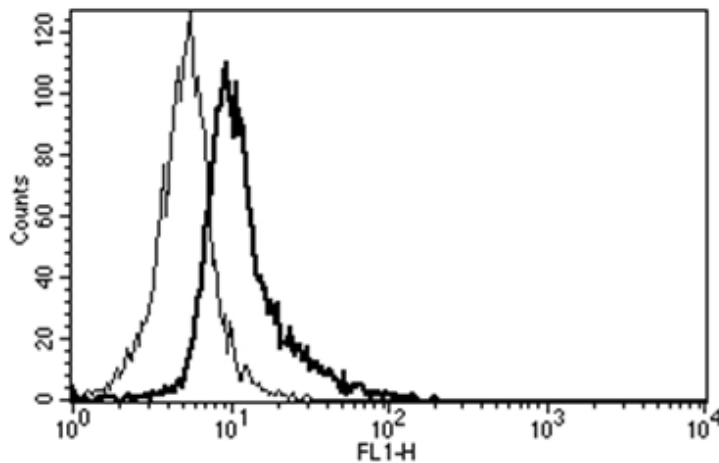
Interleukin-6 receptor subunit beta, IL-6R-beta, IL6 receptor beta

Protein Families:

Druggable Genome, Secreted Protein, Transmembrane

Protein Pathways:

Cytokine-cytokine receptor interaction, Jak-STAT signaling pathway

Product images:

A typical staining pattern with the B-R3 monoclonal antibody of Eahy 926 cell line.