

Product datasheet for **AM31350FC-N**

CD130 (IL6ST) Mouse Monoclonal Antibody [Clone ID: B-R3]

Product data:

Product Type:	Primary Antibodies
Clone Name:	B-R3
Applications:	FC
Recommended Dilution:	Flow Cytometry: Use 10 µl to label 10e6 cells in 100 µl of whole blood.
Reactivity:	Human
Host:	Mouse
Isotype:	IgG2a
Clonality:	Monoclonal
Immunogen:	Natural soluble gp130.
Specificity:	Recognises the Gp130, common subunit for IL-6, IL-11, OSM, LIF, CNTF, CT-1 receptors, a 130-140 kDa protein.
Formulation:	PBS containing 0.09% Sodium Azide as preservative and 5% BSA as stabilizer Label: FITC State: Liquid purified IgG fraction
Purification:	Ion Exchange Chromatography
Conjugation:	FITC
Storage:	Store the antibody undiluted at 2-8°C for one month or (in aliquots) at -20°C for longer. Avoid repeated freezing and thawing. This product is photosensitive and should be protected from light.
Stability:	Shelf life: one year from despatch.
Gene Name:	interleukin 6 signal transducer
Database Link:	Entrez Gene 3572 Human P40189



[View online »](#)

Background:

CD130 is a signal transducer shared by many cytokines, including interleukin 6 (IL6), ciliary neurotrophic factor (CNTF), leukemia inhibitory factor (LIF), and oncostatin M (OSM). This protein functions as a part of the cytokine receptor complex. The activation of this protein is dependent upon the binding of cytokines to their receptors. vIL6, a protein related to IL6 and encoded by the Kaposi sarcoma-associated herpesvirus, can bypass the interleukin 6 receptor (IL6R) and directly activate this protein. Knockout studies in mice suggested a critical role of the gene encoding this protein in regulating myocyte apoptosis. Alternatively spliced transcript variants encoding distinct isoforms have been described.

Synonyms:

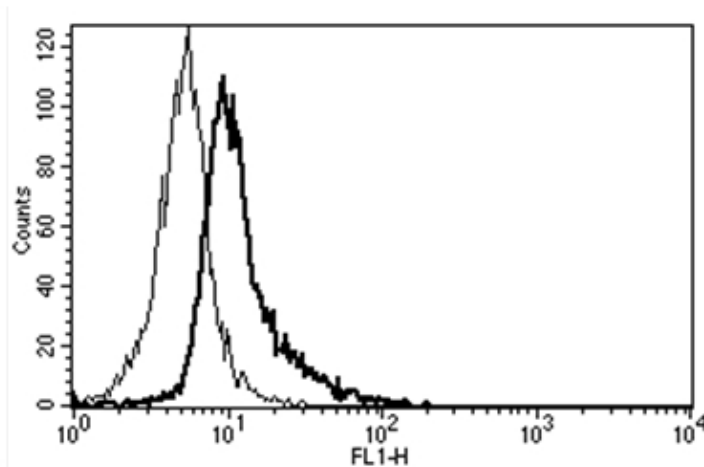
Interleukin-6 receptor subunit beta, IL-6R-beta, IL6 receptor beta

Protein Families:

Druggable Genome, Secreted Protein, Transmembrane

Protein Pathways:

Cytokine-cytokine receptor interaction, Jak-STAT signaling pathway

Product images:

A typical staining pattern with the B-R3 monoclonal antibody of Eahy 926 cell line.