

Product datasheet for **AM31349FC-N**

ICAM2 Mouse Monoclonal Antibody [Clone ID: B-T1]

Product data:

Product Type:	Primary Antibodies
Clone Name:	B-T1
Applications:	FC
Recommended Dilution:	Flow Cytometry: Use 10 μ l to label 10 ⁶ cells in 100 μ l of whole blood.
Reactivity:	Human
Host:	Mouse
Isotype:	IgG1
Clonality:	Monoclonal
Immunogen:	ICAM-2 transfected CHO cells.
Specificity:	Recognises the Intercellular Adhesion Molecule-2 (ICAM-2), a 55-65 kDa protein.
Formulation:	PBS Label: FITC State: Liquid purified IgG fraction Stabilizer: 5% BSA Preservative: 0.09% Sodium Azide Label: Fluorescein Isothiocyanate Isomer 1
Purification:	Ion Exchange Chromatography
Conjugation:	FITC
Storage:	Store undiluted at 2-8°C for one month or (in aliquots) at -20°C for longer. This product is photosensitive and should be protected from light. Avoid repeated freezing and thawing.
Stability:	Shelf life: one year from despatch
Gene Name:	intercellular adhesion molecule 2
Database Link:	Entrez Gene 3384 Human P13598



[View online »](#)

Background:

ICAM2 is a member of the intercellular adhesion molecule (ICAM) family. All ICAM proteins are type I transmembrane glycoproteins, contain 2-9 immunoglobulin like C2 type domains, and bind to the leukocyte adhesion LFA1 protein. This protein may play a role in lymphocyte recirculation by blocking LFA1 dependent cell adhesion. It mediates adhesive interactions important for antigen specific immune response, NK cell mediated clearance, lymphocyte recirculation, and other cellular interactions important for immune response and surveillance.

Synonyms:

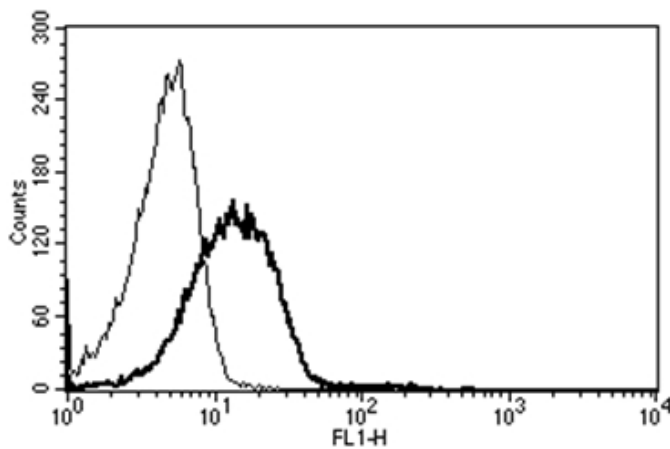
ICAM-2

Protein Families:

ES Cell Differentiation/IPS, Transmembrane

Protein Pathways:

Cell adhesion molecules (CAMs), Natural killer cell mediated cytotoxicity

Product images:

A typical staining pattern with the B-T1 monoclonal antibody of lymphocytes.