

## Product datasheet for **AM31349AF-N**

### ICAM2 Mouse Monoclonal Antibody [Clone ID: B-T1]

#### Product data:

|                       |   |
|-----------------------|---|
| Product Type:         | Primary Antibodies  |
| Clone Name:           | B-T1  |
| Applications:         | FC, FN, IP  |
| Recommended Dilution: | <b>Functional Assay:</b> Inhibits cell adhesion and T cell activation.<br><b>Flow Cytometry.</b><br><b>Immunoprecipitation.</b>     |
| Reactivity:           | Human   |
| Host:                 | Mouse   |
| Isotype:              | IgG1  |
| Clonality:            | Monoclonal  |
| Immunogen:            | ICAM-2 transfected CHO cells.   |
| Specificity:          | Recognises soluble antigen.<br>Recognises the Intercellular Adhesion Molecule-2 (ICAM-2), a 55-65 kDa protein.                      |
| Formulation:          | PBS, Sterile-filtered through 0.22 µm.<br>Carrier and preservative free<br>State: Azide Free<br>State: Liquid purified IgG fraction |
| Concentration:        | lot specific  |
| Purification:         | Ion Exchange Chromatography   |
| Conjugation:          | Unconjugated  |
| Storage:              | Store the antibody undiluted at 2-8°C.  |
| Stability:            | Shelf life: one year from despatch  |
| Gene Name:            | intercellular adhesion molecule 2   |
| Database Link:        | <a href="#">Entrez Gene 3384 Human P13598</a>   |



[View online »](#)

**Background:**

ICAM2 is a member of the intercellular adhesion molecule (ICAM) family. All ICAM proteins are type I transmembrane glycoproteins, contain 2-9 immunoglobulin like C2 type domains, and bind to the leukocyte adhesion LFA1 protein. This protein may play a role in lymphocyte recirculation by blocking LFA1 dependent cell adhesion. It mediates adhesive interactions important for antigen specific immune response, NK cell mediated clearance, lymphocyte recirculation, and other cellular interactions important for immune response and surveillance.

**Synonyms:**

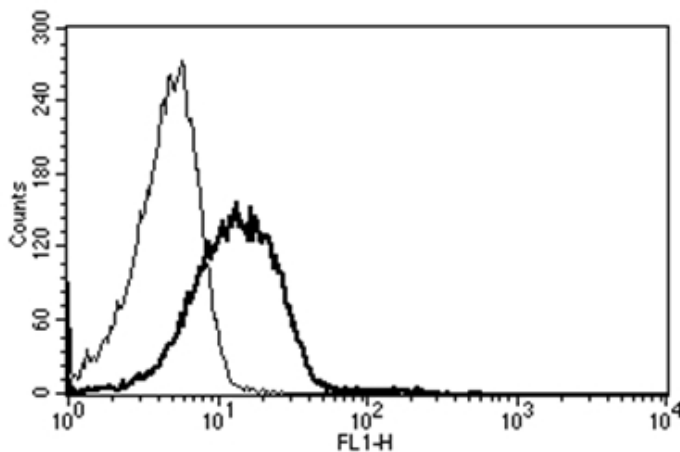
ICAM-2

**Protein Families:**

ES Cell Differentiation/IPS, Transmembrane

**Protein Pathways:**

Cell adhesion molecules (CAMs), Natural killer cell mediated cytotoxicity

**Product images:**

A typical staining pattern with the B-T1 monoclonal antibody of lymphocytes.