

Product datasheet for **AM31287PU-N**

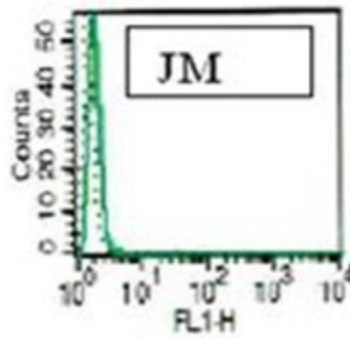
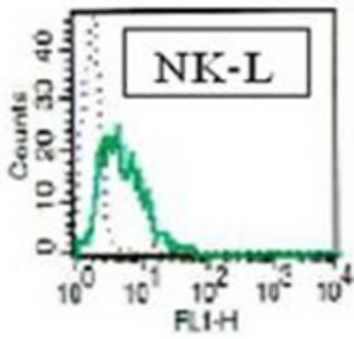
GNLY Mouse Monoclonal Antibody [Clone ID: B-L38]

Product data:

Product Type:	Primary Antibodies
Clone Name:	B-L38
Applications:	FC
Recommended Dilution:	Flow Cytometry: Use 10 µl to label 10 ⁶ cells or 100 µl of whole blood.
Reactivity:	Human
Host:	Mouse
Isotype:	IgG1
Clonality:	Monoclonal
Immunogen:	Recombinant human Granulysin (NKG5 and LAG-2)
Specificity:	This antibody recognises both natural and recombinant Granulysin.
Formulation:	Phosphate-buffered saline containing 1 % BSA as stabilizer and 0.09 % sodium azide as preservative State: Purified State: Liquid purified Ig fraction
Purification:	Ion exchange chromatography
Conjugation:	Unconjugated
Storage:	Store the antibody undiluted at 2-8°C.
Stability:	Shelf life: one year from despatch.
Gene Name:	granulysin
Database Link:	Entrez Gene 10578 Human P22749
Synonyms:	Protein NKG-5, Lymphokine LAG-2, GNLY, LAG2, NKG5, TLA519
Protein Families:	Secreted Protein



[View online »](#)

Product images:

Flow Cytometry: Intracytoplasmic staining of Granulysin with Cat. No. AM31287PU-N, clone B-L38 (green) vs. isotypic control (grey) on NK-L cell line. The JM cell line is used as a negative cell line control.