

Product datasheet for **AM31279FC-N**

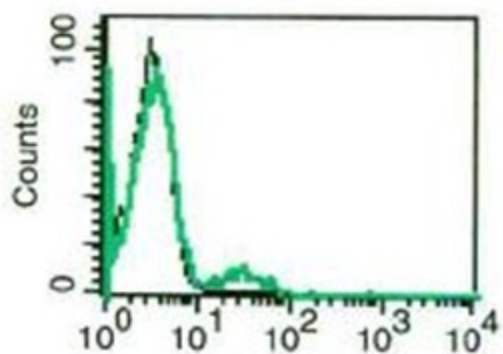
NCR1 Mouse Monoclonal Antibody [Clone ID: B-N40]

Product data:

Product Type:	Primary Antibodies
Clone Name:	B-N40
Applications:	FC
Recommended Dilution:	Flow Cytometry: Use 10 µl to label 10e6 cells or 100 µl of whole blood.
Reactivity:	Human
Host:	Mouse
Isotype:	IgG1
Clonality:	Monoclonal
Immunogen:	Recombinant human natural cytotoxicity receptor NKp46 (CD335)
Specificity:	This antibody recognizes NKp46, a 26.6 kDa protein.
Formulation:	Phosphate-buffered saline containing 5% BSA as stabilizer and 0.09% sodium azide as preservative Label: FITC State: Liquid purified Ig fraction Label: Fluoresceinisothiocyanat
Purification:	Ion exchange chromatography
Conjugation:	FITC
Storage:	Store the antibody undiluted at 2-8°C.
Stability:	Shelf life: one year from despatch.
Gene Name:	natural cytotoxicity triggering receptor 1
Database Link:	Entrez Gene 9437 Human O76036
Synonyms:	NCR1, LY94, NKp46
Protein Families:	Druggable Genome, Transmembrane
Protein Pathways:	Natural killer cell mediated cytotoxicity



[View online »](#)

Product images:

A typical staining pattern with the B-N40 monoclonal antibody on lymphocytes