

Product datasheet for **AM31273PU-N**

CD62P (SELP) Mouse Monoclonal Antibody [Clone ID: B-F46]

Product data:

Product Type:	Primary Antibodies
Clone Name:	B-F46
Applications:	FC
Recommended Dilution:	Flow Cytometry: Use 10 µl to label 10e6 cells or 100 µl of whole blood.
Reactivity:	Human
Host:	Mouse
Isotype:	IgG1
Clonality:	Monoclonal
Immunogen:	Recombinant Human CD62P
Specificity:	This antibody recognises CD62P, a 140 kD single chain type I transmembrane glycoprotein present in secretory alpha-granules in platelets, Weibel-Palade bodies in endothelial cells and megakaryocytes.
Formulation:	Phosphate buffered saline containing 1% BSA as stabilizer and 0.09% Sodium Azide as preservative State: Purified State: Liquid purified Ig fraction
Purification:	Ion Exchange Chromatography
Conjugation:	Unconjugated
Storage:	Store the antibody undiluted at 2-8°C.
Stability:	Shelf life: one year from despatch.
Gene Name:	selectin P
Database Link:	Entrez Gene 6403 Human P16109



[View online »](#)

Background:

CD62P (P-selectin) is an adhesion glycoprotein that is expressed on platelets and endothelial cells upon their activation. Interaction between CD62P and its mucin-like ligand PSGL-1 (P-selectin glycoprotein ligand-1) expressed on the microvilli of most leukocytes supports leukocyte rolling along postkapillary venules at the earliest time of inflammation. Both CD62P and PSGL-1 are extended glycoproteins that form homodimers. CD62P dimerization is probably mediated through interactions of the transmembrane domains and stabilizes leukocyte tethering and rolling, probably by increasing rebinding within a bond cluster.

Synonyms:

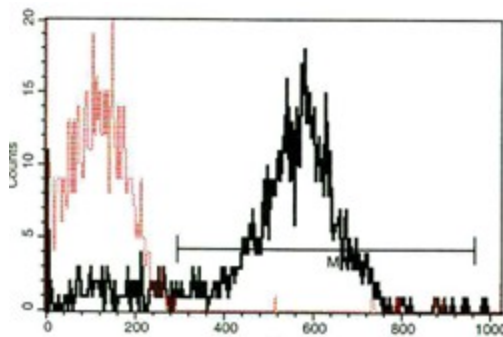
SELP, GMRP, GRMP, PADGEM, GMP-140, LECAM3

Protein Families:

Druggable Genome, ES Cell Differentiation/IPS, Transmembrane

Protein Pathways:

Cell adhesion molecules (CAMs)

Product images:

A typical staining pattern with the B-F46 monoclonal antibody of platelets.