

Product datasheet for **AM31269AF-N**

IL27 Mouse Monoclonal Antibody [Clone ID: B-G49]

Product data:

Product Type:	Primary Antibodies
Clone Name:	B-G49
Applications:	FC
Recommended Dilution:	Flow Cytometry on Dendritic cells.
Reactivity:	Human
Host:	Mouse
Isotype:	IgG2a
Clonality:	Monoclonal
Immunogen:	Recombinant Human IL-27.
Specificity:	Recognizes both natural and recombinant Human IL-27
Formulation:	Phosphate-buffered saline without Carrier and preservatives. This product is sterile-filtered through 0.22 µm and treated to remove Endotoxins. State: Azide Free State: Liquid purified IgG fraction
Concentration:	lot specific
Purification:	Ion Exchange Chromatography
Conjugation:	Unconjugated
Storage:	Store the antibody undiluted at 2-8°C.
Stability:	Shelf life: one year from despatch.
Gene Name:	interleukin 27
Database Link:	Entrez Gene 246778 Human Q8NEV9



[View online »](#)

Background:

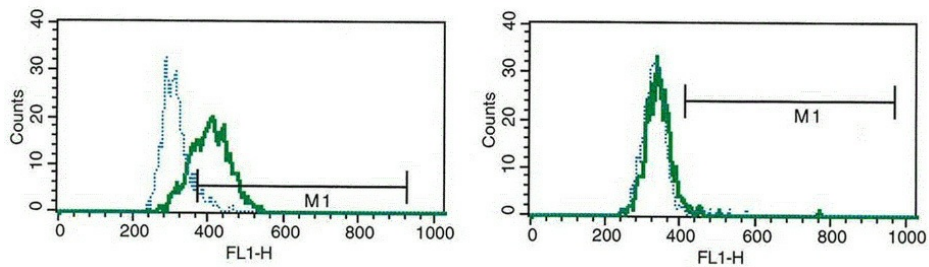
Like interleukin-23 (IL-23), IL-27 is a recently discovered member of the IL-6/IL-12 family of proinflammatory and immunoregulatory cytokines. It exists as a heterodimer composed of the p40-related protein EBI3 and an IL-12 p35-related protein termed p28. IL-27 is produced after activation by antigen-presenting cells and induces proliferation of naïve but not memory CD4⁺ T-cells. It acts by binding to its receptor WSX-1 and gp130 which results in the activation of a Jak/STAT signaling cascade, suggesting the IL-27 is involved in the regulation of immune processes. It has been suggested that IL-27 can also be used as a therapeutic agent against cancer as it can also induce tumor-specific anti-tumor activity mediated through CD8⁺ T-cells, IFN-gamma, and T-bet.

Synonyms:

IL-27 subunit alpha, IL27-A, p28, IL30, IL-30, Interleukin-30

Protein Families:

Druggable Genome, Transmembrane

Product images:

The graph on the left represents activated dendritic cells marked with B-G49 and the graph on the right shows B-G49 with non-activated dendritic cells. In the two cases, the dotted line represents the IgG2a isotype control (B-Z2).