

Product datasheet for **AM31256RP-N**

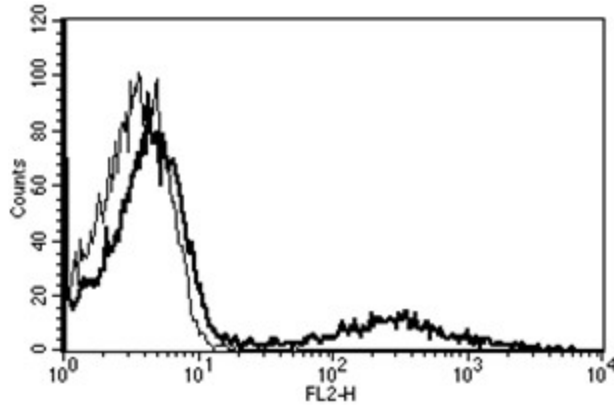
HLA Class II DR Mouse Monoclonal Antibody [Clone ID: B-F1]

Product data:

Product Type:	Primary Antibodies
Clone Name:	B-F1
Applications:	FC
Recommended Dilution:	Flow Cytometry: Use 10 µl to label 10 ⁶ cells or 100 µl of whole blood.
Reactivity:	Human
Host:	Mouse
Isotype:	IgG1
Clonality:	Monoclonal
Immunogen:	Chronic Lymphoid Leukaemia (CLL) cells
Specificity:	This antibody recognises HLA Class II DR, a 28kDa and 33kDa protein.
Formulation:	Phosphate-buffered saline containing 1 % BSA as stabilizer and 0.09 % sodium azide as preservative Label: PE State: Lyophilised purified Ig fraction Label: R - Phycoerythrin
Reconstitution Method:	Restore with 1.0 ml deionised water.
Purification:	Ion exchange chromatography
Conjugation:	PE
Storage:	Store the antibody undiluted at 2-8°C. DO NOT FREEZE!
Stability:	Shelf life: 6 month from despatch.
Synonyms:	HLA-DR, HLA class II histocompatibility antigen DR, MHC class II antigen DR



[View online »](#)

Product images:

A typical staining pattern with the B-F1 monoclonal antibody of lymphocytes