

## Product datasheet for **AM31256AF-N**

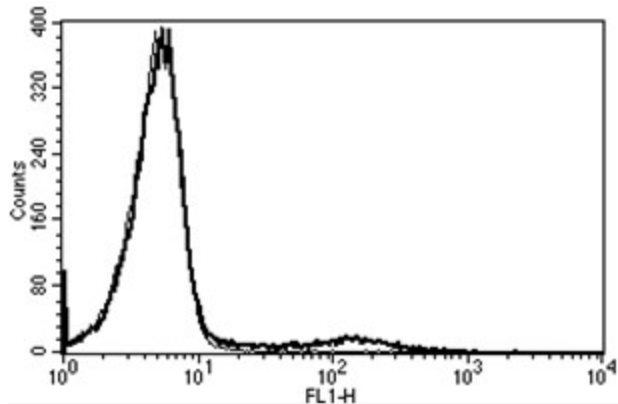
### HLA Class II DR Mouse Monoclonal Antibody [Clone ID: B-F1]

#### Product data:

Product Type:	Primary Antibodies
Clone Name:	B-F1
Applications:	FC, IP
Recommended Dilution:	<b>Immunoprecipitation.</b> <b>Flow Cytometry.</b>
Reactivity:	Human
Host:	Mouse
Isotype:	IgG1
Clonality:	Monoclonal
Immunogen:	Chronic Lymphoid Leukaemia (CLL) cells
Specificity:	This antibody recognises HLA Class II DR, a 28kDa and 33kDa protein.
Formulation:	Phosphate-buffered saline. Sterile-filtered through 0.22 µm. Carrier and preservative free State: Azide Free State: Liquid purified Ig fraction
Concentration:	lot specific
Purification:	Ion exchange chromatography
Conjugation:	Unconjugated
Storage:	Store the antibody undiluted at 2-8°C.
Stability:	Shelf life: one year from despatch.
Synonyms:	HLA-DR, HLA class II histocompatibility antigen DR, MHC class II antigen DR



[View online »](#)

**Product images:**

A typical staining pattern with the B-F1 monoclonal antibody of lymphocytes