

## Product datasheet for **AM31242RP-N**

### **c Kit (KIT) Mouse Monoclonal Antibody [Clone ID: B-K15]**

#### Product data:

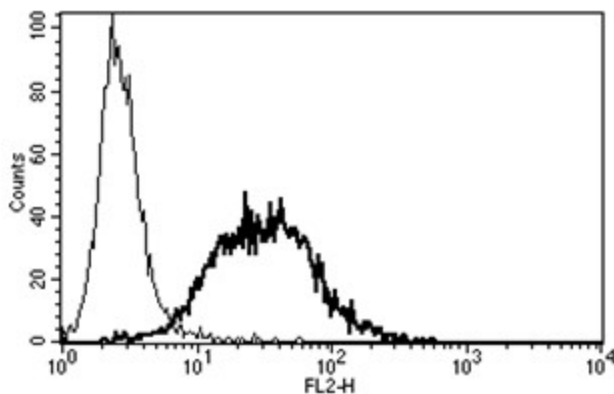
Product Type:	Primary Antibodies
Clone Name:	B-K15
Applications:	FC
Recommended Dilution:	<b>Flow Cytometry:</b> Use 10 µl to label 10 <sup>6</sup> cells or 100 µl of whole blood.
Reactivity:	Human
Host:	Mouse
Isotype:	IgG1
Clonality:	Monoclonal
Immunogen:	Recombinant c-kit
Specificity:	This antibody recognises the Stem Cell Factor Receptor, SCF R, c-kit, a 145 kDa protein.
Formulation:	Phosphate-buffered saline containing 1% BSA as stabilizer and 0.09% sodium azide as preservative Label: PE State: Lyophilized purified IgG fraction Label: R - Phycoerythrin
Reconstitution Method:	Restore with 1.0 ml deionised water.
Purification:	Ion exchange chromatography
Conjugation:	PE
Storage:	Store the antibody undiluted at 2-8°C. <b>DO NOT FREEZE!</b>
Stability:	Shelf life: 6 month from despatch.
Gene Name:	KIT proto-oncogene receptor tyrosine kinase
Database Link:	<a href="#">Entrez Gene 3815 Human P10721</a>
Synonyms:	SCFR, KIT
Protein Families:	Adult stem cells, Druggable Genome, Embryonic stem cells, ES Cell Differentiation/IPs, Protein Kinase, Stem cell - Pluripotency, Transmembrane



[View online »](#)

**Protein Pathways:** Acute myeloid leukemia, Cytokine-cytokine receptor interaction, Endocytosis, Hematopoietic cell lineage, Melanogenesis, Pathways in cancer

**Product images:**



A typical staining pattern with the B-K15 monoclonal antibody of TF1 cell line