

## Product datasheet for **AM31242AF-N**

### **c Kit (KIT) Mouse Monoclonal Antibody [Clone ID: B-K15]**

#### Product data:

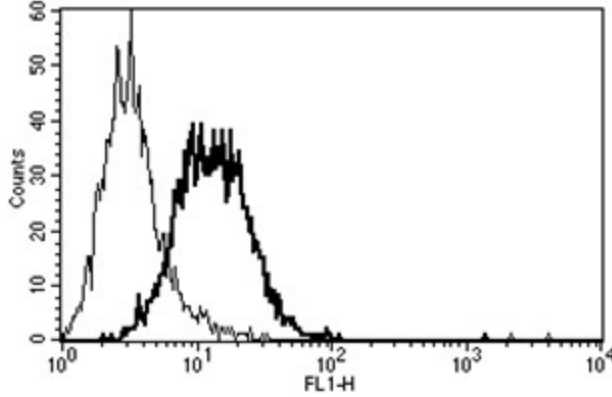
Product Type:	Primary Antibodies
Clone Name:	B-K15
Applications:	FC, FN
Recommended Dilution:	<b>Flow Cytometry.</b>
	<b>Functional Assay:</b> Inhibits the Kit-Ligand induced proliferation of TF1 cell line.
Reactivity:	Human
Host:	Mouse
Isotype:	IgG1
Clonality:	Monoclonal
Immunogen:	Recombinant c-kit
Specificity:	This antibody recognises the Stem Cell Factor Receptor, SCF R, c-kit, a 145 kDa protein.
Formulation:	Phosphate-buffered saline. Sterile-filtered through 0.22 µm. Carrier and preservative free State: Azide Free State: Liquid purified IgG fraction
Concentration:	lot specific
Purification:	Ion Exchange Chromatography
Conjugation:	Unconjugated
Storage:	Store the antibody undiluted at 2-8°C.
Stability:	Shelf life: one year from despatch.
Gene Name:	KIT proto-oncogene receptor tyrosine kinase
Database Link:	<a href="#">Entrez Gene 3815 Human P10721</a>
Synonyms:	SCFR, KIT
Protein Families:	Adult stem cells, Druggable Genome, Embryonic stem cells, ES Cell Differentiation/IPS, Protein Kinase, Stem cell - Pluripotency, Transmembrane



[View online »](#)

**Protein Pathways:** Acute myeloid leukemia, Cytokine-cytokine receptor interaction, Endocytosis, Hematopoietic cell lineage, Melanogenesis, Pathways in cancer

**Product images:**



A typical staining pattern with the B-K15 monoclonal antibody of TF1 cell line