

Product datasheet for **AM31240PU-N**

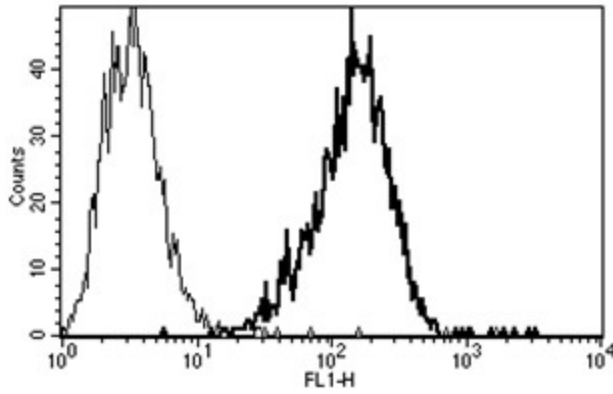
CDw75 (ST6GAL1) Mouse Monoclonal Antibody [Clone ID: B-L5]

Product data:

Product Type:	Primary Antibodies
Clone Name:	B-L5
Applications:	FC
Recommended Dilution:	Flow Cytometry: Use 10 µl to label 10e6 cells or 100 µl of whole blood.
Reactivity:	Human
Host:	Mouse
Isotype:	IgM
Clonality:	Monoclonal
Immunogen:	Raji cell line
Specificity:	This antibody recognises the lactosamines.
Formulation:	Phosphate-buffered saline containing 1 % BSA as stabilizer and 0.09 % sodium azide as preservative State: Purified State: Liquid purified Ig fraction
Purification:	Gel filtration
Conjugation:	Unconjugated
Storage:	Store the antibody undiluted at 2-8°C.
Stability:	Shelf life: one year from despatch.
Gene Name:	ST6 beta-galactoside alpha-2,6-sialyltransferase 1
Database Link:	Entrez Gene 6480 Human P15907
Synonyms:	SIAT1, B-Cell marker
Protein Families:	Secreted Protein
Protein Pathways:	Metabolic pathways, N-Glycan biosynthesis



[View online »](#)

Product images:

A typical staining pattern with the B-L5 monoclonal antibody of Raji cell line