

Product datasheet for **AM31238RP-N**

CD40L (CD40LG) Mouse Monoclonal Antibody [Clone ID: B-B29]

Product data:

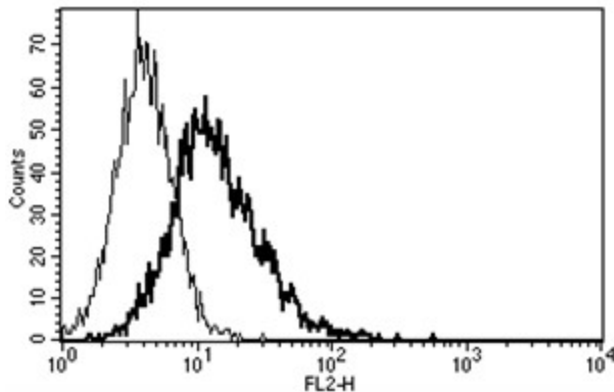
Product Type:	Primary Antibodies
Clone Name:	B-B29
Applications:	FC
Recommended Dilution:	Flow Cytometry: Use 10 µl to label 10 ⁶ cells or 100 µl of whole blood.
Reactivity:	Human
Host:	Mouse
Isotype:	IgG2a
Clonality:	Monoclonal
Immunogen:	CD40L transfected 3T6 cell line
Specificity:	This antibody recognises the CD40L, TRAP, T-BAM antigen, a 28/30/33 kDa protein.
Formulation:	Phosphate-buffered saline containing 1 % BSA as stabilizer and 0.09 % sodium azide as preservative Label: PE State: Lyophilised purified Ig fraction Label: R - Phycoerythrin
Reconstitution Method:	Restore with 1.0 ml deionised water.
Purification:	Ion exchange chromatography
Conjugation:	PE
Storage:	Store the antibody undiluted at 2-8°C. DO NOT FREEZE!
Stability:	Shelf life: 6 month from despatch.
Gene Name:	CD40 ligand
Database Link:	Entrez Gene 959 Human P29965
Synonyms:	CD40 ligand, CD40-L, CD40LG, TNFSF5, TRAP, GP39
Protein Families:	Druggable Genome, Secreted Protein, Transmembrane



[View online »](#)

Protein Pathways: Allograft rejection, Asthma, Autoimmune thyroid disease, Cell adhesion molecules (CAMs), Cytokine-cytokine receptor interaction, Primary immunodeficiency, Systemic lupus erythematosus, T cell receptor signaling pathway, Viral myocarditis

Product images:



A typical staining pattern with the B-B29 monoclonal antibody of CD40L transfected 3T6 cell line