

## Product datasheet for **AM31238PU-N**

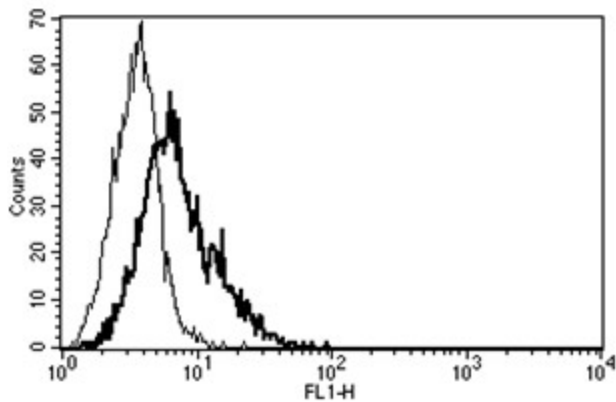
### CD40L (CD40LG) Mouse Monoclonal Antibody [Clone ID: B-B29]

#### Product data:

Product Type:	Primary Antibodies
Clone Name:	B-B29
Applications:	FC
Recommended Dilution:	Flow Cytometry: Use 10 µl to label 10e6 cells or 100 µl of whole blood.
Reactivity:	Human
Host:	Mouse
Isotype:	IgG2a
Clonality:	Monoclonal
Immunogen:	CD40L transfected 3T6 cell line
Specificity:	This antibody recognises the CD40L, TRAP, T-BAM antigen, a 28/30/33 kDa protein.
Formulation:	Phosphate-buffered saline containing 1 % BSA as stabilizer and 0.09 % sodium azide as preservative State: Purified State: Liquid purified Ig fraction
Purification:	Ion exchange chromatography
Conjugation:	Unconjugated
Storage:	Store the antibody undiluted at 2-8°C.
Stability:	Shelf life: one year from despatch.
Gene Name:	CD40 ligand
Database Link:	<a href="#">Entrez Gene 959 Human P29965</a>
Synonyms:	CD40 ligand, CD40-L, CD40LG, TNFSF5, TRAP, GP39
Protein Families:	Druggable Genome, Secreted Protein, Transmembrane
Protein Pathways:	Allograft rejection, Asthma, Autoimmune thyroid disease, Cell adhesion molecules (CAMs), Cytokine-cytokine receptor interaction, Primary immunodeficiency, Systemic lupus erythematosus, T cell receptor signaling pathway, Viral myocarditis



[View online »](#)

**Product images:**

A typical staining pattern with the B-B29 monoclonal antibody of CD40L transfected 3T6 cell line