

Product datasheet for **AM31238AF-N**

CD40L (CD40LG) Mouse Monoclonal Antibody [Clone ID: B-B29]

Product data:

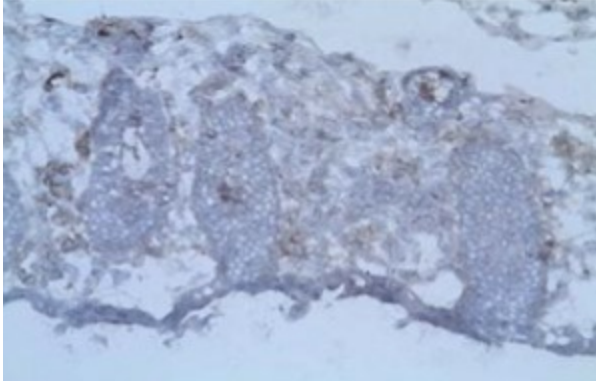
Product Type:	Primary Antibodies
Clone Name:	B-B29
Applications:	FC, IHC
Recommended Dilution:	Flow Cytometry. Immunohistochemistry on Frozen Sections.
Reactivity:	Human
Host:	Mouse
Isotype:	IgG2a
Clonality:	Monoclonal
Immunogen:	CD40L transfected 3T6 cell line
Specificity:	This antibody recognises the CD40L, TRAP, T-BAM antigen, a 28/30/33 kDa protein.
Formulation:	PBS. Sterile-filtered through 0.22 µm. Carrier and preservative free State: Azide Free State: Liquid purified Ig fraction
Concentration:	lot specific
Purification:	Ion Exchange Chromatography
Conjugation:	Unconjugated
Storage:	Store undiluted at 2-8°C. DO NOT FREEZE!
Stability:	Shelf life: one year from despatch.
Gene Name:	CD40 ligand
Database Link:	Entrez Gene 959 Human P29965
Synonyms:	CD40 ligand, CD40-L, CD40LG, TNFSF5, TRAP, GP39
Protein Families:	Druggable Genome, Secreted Protein, Transmembrane



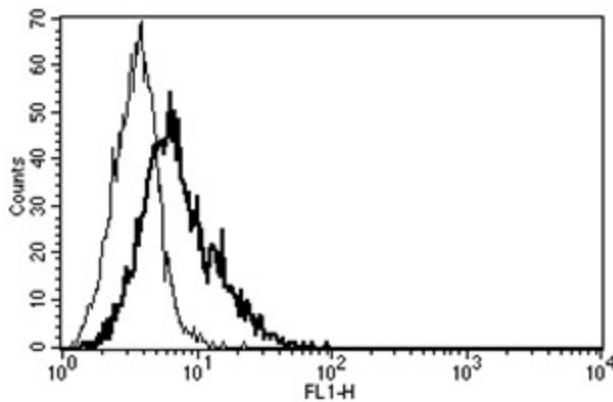
[View online »](#)

Protein Pathways: Allograft rejection, Asthma, Autoimmune thyroid disease, Cell adhesion molecules (CAMs), Cytokine-cytokine receptor interaction, Primary immunodeficiency, Systemic lupus erythematosus, T cell receptor signaling pathway, Viral myocarditis

Product images:



Immunohistochemistry analysis on Frozen Section (Acetone fixed) of human colic mucosa using CD154 / CD40L (Clone B-B29) antibody. (diluted at 1/100. Bbackground coloration by hematoxylin.



A typical staining pattern of CD40L transfected 3T6 cell line using the CD154 / CD40L (clone B-B29) monoclonal antibody.