

Product datasheet for **AM31234PU-N**

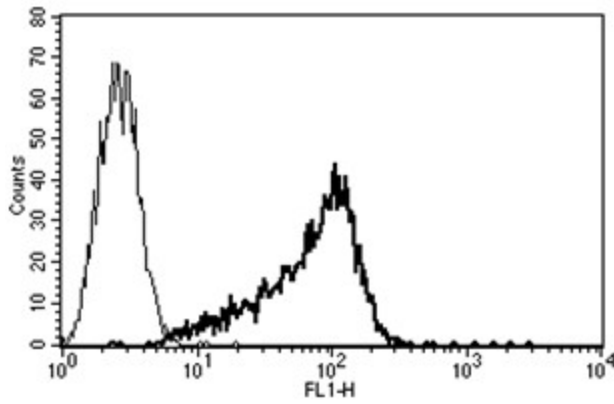
CD34 Class I Mouse Monoclonal Antibody [Clone ID: B-G25]

Product data:

| | |
|-----------------------|---|
| Product Type: | Primary Antibodies |
| Clone Name: | B-G25 |
| Applications: | FC |
| Recommended Dilution: | Flow cytometry: Use 10 µl to label 10e6 cells or 100 µl of whole blood. |
| Reactivity: | Human |
| Host: | Mouse |
| Isotype: | IgG1 |
| Clonality: | Monoclonal |
| Immunogen: | KG-1a cell line |
| Specificity: | This antibody recognises the Gp105-120 antigen, a 105-120 kDa protein. |
| Formulation: | Phosphate-buffered saline containing 1 % BSA as stabilizer and 0.09 % sodium azide as preservative State: Purified State: Liquid purified Ig fraction |
| Purification: | Ion exchange chromatography |
| Conjugation: | Unconjugated |
| Storage: | Store the antibody undiluted at 2-8°C. |
| Stability: | Shelf life: one year from despatch. |
| Gene Name: | CD34 molecule |
| Database Link: | Entrez Gene 947 Human P28906 |
| Synonyms: | Hematopoietic progenitor cell marker |
| Protein Families: | Adult stem cells, Cancer stem cells, Druggable Genome, Embryonic stem cells, ES Cell Differentiation/IPS, Transmembrane |
| Protein Pathways: | Cell adhesion molecules (CAMs), Hematopoietic cell lineage |



[View online »](#)

Product images:

A typical staining pattern with the B-G25 monoclonal antibody of KG1a cell line