

Product datasheet for **AM31232RP-N**

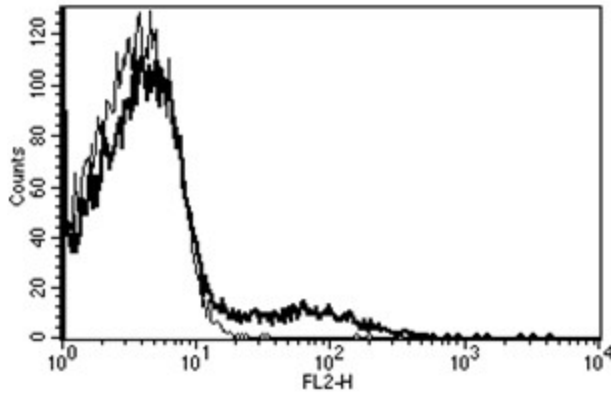
CD23 (FCER2) Mouse Monoclonal Antibody [Clone ID: B-G6]

Product data:

Product Type:	Primary Antibodies
Clone Name:	B-G6
Applications:	FC
Recommended Dilution:	Flow Cytometry: Use 10 µl to label 10 ⁶ cells or 100 µl of whole blood.
Reactivity:	Human
Host:	Mouse
Isotype:	IgG1
Clonality:	Monoclonal
Immunogen:	Daudi cell line
Specificity:	This antibody recognises the low affinity IgE receptor (Fce RII), a 45 kDa protein.
Formulation:	Phosphate-buffered saline containing 1 % BSA as stabilizer and 0.09 % sodium azide as preservative Label: PE State: Lyophilised purified Ig fraction Label: R - Phycoerythrin
Reconstitution Method:	Restore with 1.0 ml deionised water.
Purification:	Ion exchange chromatography
Conjugation:	PE
Storage:	Store the antibody undiluted at 2-8°C. DO NOT FREEZE!
Stability:	Shelf life: 6 month from despatch.
Gene Name:	Fc fragment of IgE receptor II
Database Link:	Entrez Gene 2208 Human P06734
Synonyms:	Fc-epsilon-RII, FCER2, CD23A, FCE2, IGEBF
Protein Families:	Secreted Protein, Transmembrane
Protein Pathways:	Hematopoietic cell lineage



[View online »](#)

Product images:

A typical staining pattern with the B-G6 monoclonal antibody of lymphocytes