

## Product datasheet for **AM31232FC-N**

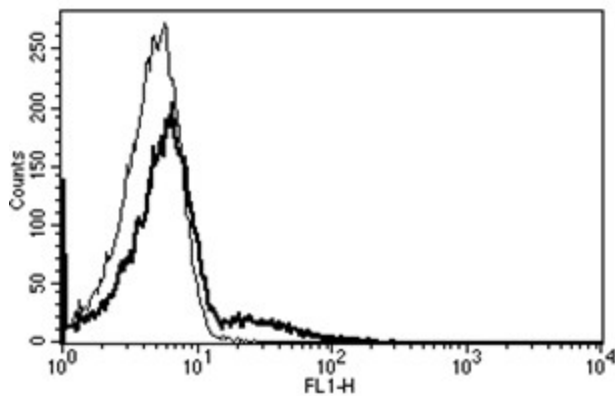
### CD23 (FCER2) Mouse Monoclonal Antibody [Clone ID: B-G6]

#### Product data:

Product Type:	Primary Antibodies
Clone Name:	B-G6
Applications:	FC
Recommended Dilution:	<b>Flow Cytometry:</b> Use 10 µl to label 10e6 cells or 100 µl of whole blood.
Reactivity:	Human
Host:	Mouse
Isotype:	IgG1
Clonality:	Monoclonal
Immunogen:	Daudi cell line
Specificity:	This antibody recognises the low affinity IgE receptor (Fce RII), a 45 kDa protein.
Formulation:	Phosphate-buffered saline containing 1 % BSA as stabilizer and 0.09 % sodium azide as preservative Label: FITC State: Liquid purified Ig fraction Label: Fluoresceinisothiocyanat
Purification:	Ion exchange chromatography
Conjugation:	FITC
Storage:	Store the antibody undiluted at 2-8°C.
Stability:	Shelf life: one year from despatch.
Gene Name:	Fc fragment of IgE receptor II
Database Link:	<a href="#">Entrez Gene 2208 Human P06734</a>
Synonyms:	Fc-epsilon-RII, FCER2, CD23A, FCE2, IGEBF
Protein Families:	Secreted Protein, Transmembrane
Protein Pathways:	Hematopoietic cell lineage



[View online »](#)

**Product images:**

A typical staining pattern with the B-G6 monoclonal antibody of lymphocytes