

Product datasheet for **AM31230RP-N**

CD21 (CR2) Mouse Monoclonal Antibody [Clone ID: B-E5]

Product data:

Product Type:	Primary Antibodies
Clone Name:	B-E5
Applications:	FC
Recommended Dilution:	Flow Cytometry: Use 10 µl to label 10 ⁶ cells or 100 µl of whole blood. Competes with the EBV virus for binding to the CD21 antigen
Reactivity:	Human
Host:	Mouse
Isotype:	IgG2a
Clonality:	Monoclonal
Immunogen:	Daudi cell line
Specificity:	This antibody recognises the soluble Epstein-Barr virus receptor (EBV R), CR2, C3d R, a 110 kDa protein.
Formulation:	Phosphate-buffered saline containing 1 % BSA as stabilizer and 0.09 % sodium azide as preservative Label: PE State: Lyophilised purified Ig fraction Label: R - Phycoerythrin
Reconstitution Method:	Restore with 1.0 ml deionised water.
Purification:	Ion exchange chromatography
Conjugation:	PE
Storage:	Store the antibody undiluted at 2-8°C. DO NOT FREEZE!
Stability:	Shelf life: 6 month from despatch.
Gene Name:	complement component 3d receptor 2
Database Link:	Entrez Gene 1380 Human P20023
Synonyms:	Complement receptor type 2, CR2, C3DR, C3d receptor, EBV Receptor, Dendritic Cell Marker

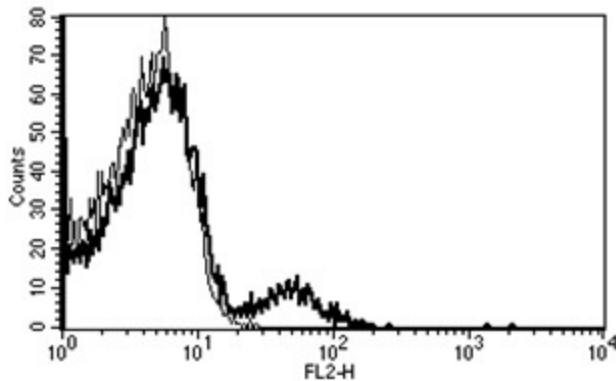


[View online »](#)

Protein Families: Druggable Genome, Transmembrane

Protein Pathways: B cell receptor signaling pathway, Complement and coagulation cascades, Hematopoietic cell lineage

Product images:



A typical staining pattern with the B-E5 monoclonal antibody of lymphocytes