

Product datasheet for **AM31230PU-N**

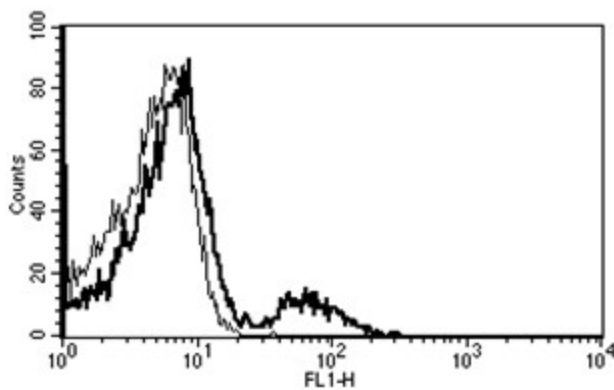
CD21 (CR2) Mouse Monoclonal Antibody [Clone ID: B-E5]

Product data:

Product Type:	Primary Antibodies
Clone Name:	B-E5
Applications:	FC, IHC
Recommended Dilution:	Immunohistochemistry on paraffin sections. Flow cytometry: Use 10 µl to label 10e6 cells or 100 µl of whole blood.
Reactivity:	Human
Host:	Mouse
Isotype:	IgG2a
Clonality:	Monoclonal
Immunogen:	Daudi cell line
Specificity:	This antibody recognises the soluble Epstein-Barr virus receptor (EBV R), CR2, C3d R, a 110 kDa protein.
Formulation:	Phosphate-buffered saline containing 1 % BSA as stabilizer and 0.09 % sodium azide as preservative State: Purified State: Liquid purified Ig fraction
Purification:	Ion exchange chromatography
Conjugation:	Unconjugated
Storage:	Store the antibody undiluted at 2-8°C.
Stability:	Shelf life: one year from despatch.
Gene Name:	complement component 3d receptor 2
Database Link:	Entrez Gene 1380 Human P20023
Synonyms:	Complement receptor type 2, CR2, C3DR, C3d receptor, EBV Receptor, Dendritic Cell Marker
Protein Families:	Druggable Genome, Transmembrane
Protein Pathways:	B cell receptor signaling pathway, Complement and coagulation cascades, Hematopoietic cell lineage



[View online »](#)

Product images:

A typical staining pattern with the B-E5 monoclonal antibody of lymphocytes