

Product datasheet for **AM31230FC-N**

CD21 (CR2) Mouse Monoclonal Antibody [Clone ID: B-E5]

Product data:

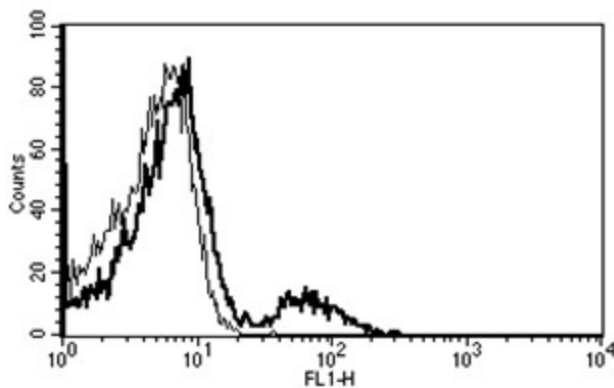
Product Type:	Primary Antibodies
Clone Name:	B-E5
Applications:	FC
Recommended Dilution:	Flow cytometry: Use 10 µl to label 10e6 cells or 100 µl of whole blood. Competes with the EBV virus for binding to the CD21 antigen
Reactivity:	Human
Host:	Mouse
Isotype:	IgG2a
Clonality:	Monoclonal
Immunogen:	Daudi cell line
Specificity:	This antibody recognises the soluble Epstein-Barr virus receptor (EBV R), CR2, C3d R, a 110 kDa protein.
Formulation:	PBS Label: FITC State: Liquid purified IgG fraction Stabilizer: 1% BSA Preservative: 0.09% Sodium Azide Label: Fluoresceinisothiocyanat
Purification:	Ion Exchange Chromatography
Conjugation:	FITC
Storage:	Store the antibody undiluted at 2-8°C.
Stability:	Shelf life: one year from despatch.
Gene Name:	complement component 3d receptor 2
Database Link:	Entrez Gene 1380 Human P20023
Synonyms:	Complement receptor type 2, CR2, C3DR, C3d receptor, EBV Receptor, Dendritic Cell Marker
Protein Families:	Druggable Genome, Transmembrane



[View online »](#)

Protein Pathways: B cell receptor signaling pathway, Complement and coagulation cascades, Hematopoietic cell lineage

Product images:



A typical staining pattern with the B-E5 monoclonal antibody of lymphocytes