

## Product datasheet for **AM31230AF-N**

### CD21 (CR2) Mouse Monoclonal Antibody [Clone ID: B-E5]

#### Product data:

Product Type:	Primary Antibodies
Clone Name:	B-E5
Applications:	FC, FN
Recommended Dilution:	<b>Flow Cytometry.</b>
	<b>Functional Assay:</b> Induces human B lymphocytes proliferation. Competes with EBV for CD21 binding.
Reactivity:	Human
Host:	Mouse
Isotype:	IgG2a
Clonality:	Monoclonal
Immunogen:	Daudi cell line.
Specificity:	This antibody recognises the soluble Epstein-Barr virus receptor (EBV R), CR2, C3d R, a 110 kDa protein.
Formulation:	Phosphate-buffered saline. Sterile-filtered through 0.22 µm. Carrier and preservative free. State: Azide Free State: Liquid purified IgG fraction
Concentration:	lot specific
Purification:	Ion Exchange Chromatography
Conjugation:	Unconjugated
Storage:	Store the antibody undiluted at 2-8°C.
Stability:	Shelf life: one year from despatch.
Gene Name:	complement component 3d receptor 2
Database Link:	<a href="#">Entrez Gene 1380 Human P20023</a>
Synonyms:	Complement receptor type 2, CR2, C3DR, C3d receptor, EBV Receptor, Dendritic Cell Marker

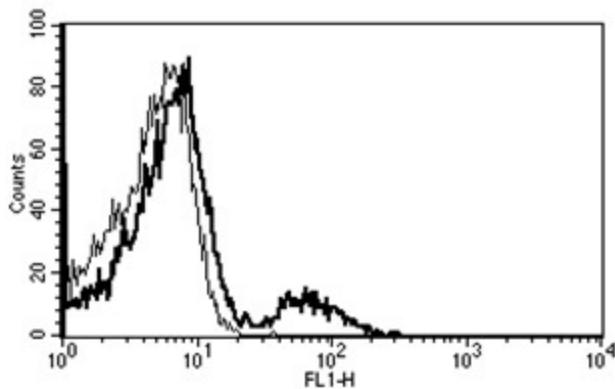


[View online »](#)

**Protein Families:** Druggable Genome, Transmembrane

**Protein Pathways:** B cell receptor signaling pathway, Complement and coagulation cascades, Hematopoietic cell lineage

**Product images:**



A typical staining pattern with the B-E5 monoclonal antibody of lymphocytes