

## Product datasheet for **AM31228FC-N**

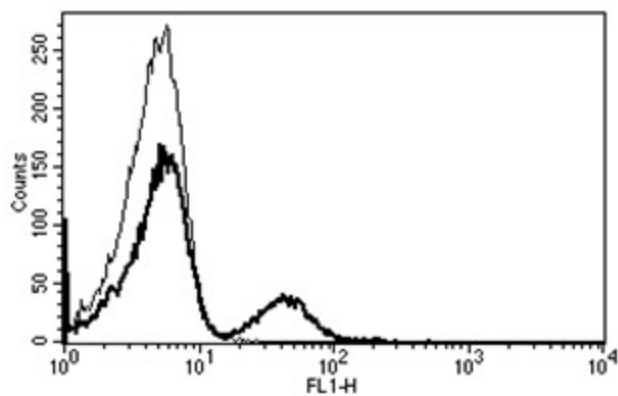
### CD19 Mouse Monoclonal Antibody [Clone ID: B-C3]

#### Product data:

Product Type:	Primary Antibodies
Clone Name:	B-C3
Applications:	FC
Recommended Dilution:	<b>Flow Cytometry:</b> Use 10 µl to label 10 <sup>6</sup> cells or 100 µl of whole blood.
Reactivity:	Human
Host:	Mouse
Isotype:	IgG1
Clonality:	Monoclonal
Immunogen:	Chronic Lymphoid Leukaemia (CLL) cells
Specificity:	This antibody recognises a 95 kDa protein.
Formulation:	Phosphate-buffered saline containing 1 % BSA as stabilizer and 0.09 % sodium azide as preservative Label: FITC State: Liquid purified IgG fraction Label: Fluoresceinisothiocyanat
Purification:	Ion exchange chromatography
Conjugation:	FITC
Storage:	Store the antibody undiluted at 2-8°C.
Stability:	Shelf life: one year from despatch.
Gene Name:	CD19 molecule
Database Link:	<a href="#">Entrez Gene 930 Human P15391</a>
Synonyms:	Leu-12, B-cell marker
Protein Families:	Druggable Genome, Transmembrane
Protein Pathways:	B cell receptor signaling pathway, Hematopoietic cell lineage, Primary immunodeficiency



[View online »](#)

**Product images:**

A typical staining pattern with the B-C3 monoclonal antibody of lymphocytes