

Product datasheet for **AM31227FC-N**

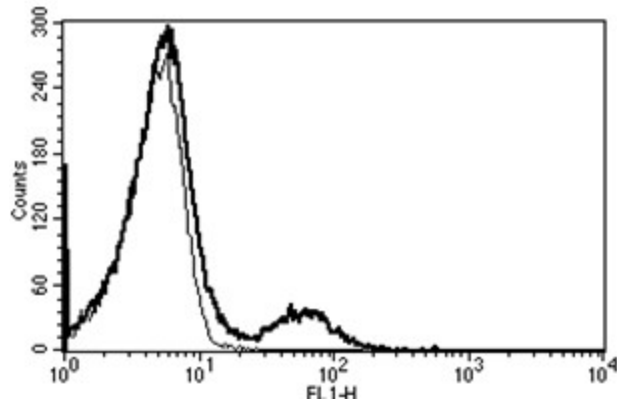
CD16 (FCGR3A) Mouse Monoclonal Antibody [Clone ID: B-E16]

Product data:

| | |
|-----------------------|---|
| Product Type: | Primary Antibodies |
| Clone Name: | B-E16 |
| Applications: | FC |
| Recommended Dilution: | Flow Cytometry: Use 10 µl to label 10 ⁶ cells or 100 µl of whole blood. |
| Reactivity: | Human |
| Host: | Mouse |
| Isotype: | IgG2a |
| Clonality: | Monoclonal |
| Immunogen: | Natural killer cells |
| Specificity: | This antibody recognises the low affinity Fc receptor for IgG (Fcγ RIII), a 50-65 kDa protein. |
| Formulation: | Phosphate-buffered saline containing 1 % BSA as stabilizer and 0.09 % sodium azide as preservative Label: FITC State: Liquid purified IgG fraction Label: Fluoresceinisothiocyanat |
| Purification: | Ion exchange chromatography |
| Conjugation: | FITC |
| Storage: | Store the antibody undiluted at 2-8°C. |
| Stability: | Shelf life: one year from despatch. |
| Gene Name: | Fc fragment of IgG receptor IIIa |
| Database Link: | Entrez Gene 2214 Human P08637 |
| Synonyms: | FCGR3A, CD16A, FCG3, FCGR3, IGFR3, Fc-gamma RIII-alpha, Fc-gamma RIII, Fc-gamma RIIIa, FcRIII, FcRIIIa, FcR-10, IgG Fc receptor III-2 |
| Protein Families: | ES Cell Differentiation/IPS, Secreted Protein, Transmembrane |
| Protein Pathways: | Fc gamma R-mediated phagocytosis, Natural killer cell mediated cytotoxicity, Systemic lupus erythematosus |



[View online »](#)

Product images:

A typical staining pattern with the B-E16 monoclonal antibody of lymphocytes