

Product datasheet for **AM31226RP-N**

CD45 (PTPRC) (CD45RA) Mouse Monoclonal Antibody [Clone ID: B-C15]

Product data:

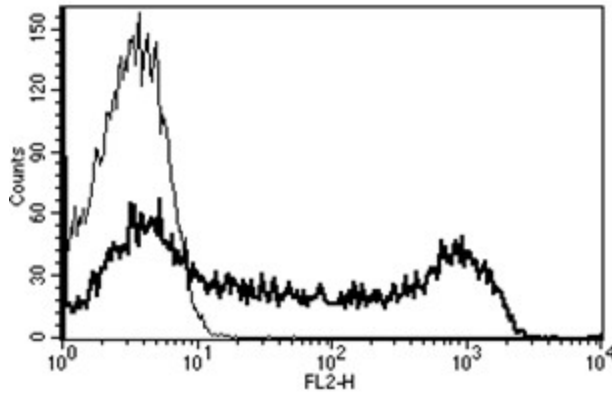
Product Type:	Primary Antibodies
Clone Name:	B-C15
Applications:	FC
Recommended Dilution:	Flow Cytometry: Use 10 µl to label 10 ⁶ cells or 100 µl of whole blood.
Reactivity:	Human
Host:	Mouse
Isotype:	IgG1
Clonality:	Monoclonal
Immunogen:	Reh 6 cell line
Specificity:	This antibody recognises the restricted Leucocyte Common Antigen (LCA) with different isoforms of 205/220 kDa.
Formulation:	Phosphate-buffered saline containing 1 % BSA as stabilizer and 0.09 % sodium azide as preservative Label: PE State: Lyophilised purified Ig fraction Label: R - Phycoerythrin
Reconstitution Method:	Restore with 1.0 ml deionised water.
Purification:	Ion exchange chromatography
Conjugation:	PE
Storage:	Store the antibody undiluted at 2-8°C. DO NOT FREEZE!
Stability:	Shelf life: 6 month from despatch.
Gene Name:	protein tyrosine phosphatase, receptor type C
Database Link:	Entrez Gene 5788 Human P08575
Synonyms:	PTPRC, Leukocyte common antigen, L-CA, T200
Protein Families:	Druggable Genome, ES Cell Differentiation/IPS, Phosphatase, Transmembrane



[View online »](#)

Protein Pathways: Cell adhesion molecules (CAMs), Fc gamma R-mediated phagocytosis, Primary immunodeficiency, T cell receptor signaling pathway

Product images:



A typical staining pattern with the B-C15 monoclonal antibody of lymphocytes