

## Product datasheet for **AM31226FC-N**

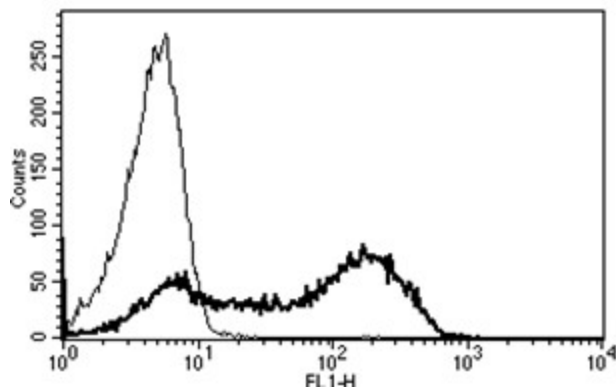
### CD45 (PTPRC) (CD45RA) Mouse Monoclonal Antibody [Clone ID: B-C15]

#### Product data:

Product Type:	Primary Antibodies
Clone Name:	B-C15
Applications:	FC
Recommended Dilution:	<b>Flow Cytometry</b> Use 10 µl to label 10e6 cells or 100 µl of whole blood.
Reactivity:	Human
Host:	Mouse
Isotype:	IgG1
Clonality:	Monoclonal
Immunogen:	Reh 6 cell line
Specificity:	This antibody recognises the restricted Leucocyte Common Antigen (LCA) with different isoforms of 205/220 kDa.
Formulation:	Phosphate-buffered saline containing 1 % BSA as stabilizer and 0.09 % sodium azide as preservative Label: FITC State: Liquid purified IgG fraction Label: Fluoresceinisothiocyanat
Purification:	Ion exchange chromatography
Conjugation:	FITC
Storage:	Store the antibody undiluted at 2-8°C.
Stability:	Shelf life: one year from despatch.
Gene Name:	protein tyrosine phosphatase, receptor type C
Database Link:	<a href="#">Entrez Gene 5788 Human P08575</a>
Synonyms:	PTPRC, Leukocyte common antigen, L-CA, T200
Protein Families:	Druggable Genome, ES Cell Differentiation/IPS, Phosphatase, Transmembrane
Protein Pathways:	Cell adhesion molecules (CAMs), Fc gamma R-mediated phagocytosis, Primary immunodeficiency, T cell receptor signaling pathway



[View online »](#)

**Product images:**

A typical staining pattern with the B-C15 monoclonal antibody of lymphocytes